

# **AirWorks AWK-3121 User's Manual**

---

**Edition 9.2, August 2016**

[www.moxa.com/product](http://www.moxa.com/product)



© 2016 Moxa Inc. All rights reserved.

# AirWorks AWK-3121 User's Manual

The software described in this manual is furnished under a license agreement and may be used only in accordance with the terms of that agreement.

## Copyright Notice

© 2016 Moxa Inc. All rights reserved.

## Trademarks

The MOXA logo is a registered trademark of Moxa Inc.  
All other trademarks or registered marks in this manual belong to their respective manufacturers.

## Disclaimer

Information in this document is subject to change without notice and does not represent a commitment on the part of Moxa.

Moxa provides this document as is, without warranty of any kind, either expressed or implied, including, but not limited to, its particular purpose. Moxa reserves the right to make improvements and/or changes to this manual, or to the products and/or the programs described in this manual, at any time.

Information provided in this manual is intended to be accurate and reliable. However, Moxa assumes no responsibility for its use, or for any infringements on the rights of third parties that may result from its use.

This product might include unintentional technical or typographical errors. Changes are periodically made to the information herein to correct such errors, and these changes are incorporated into new editions of the publication.

## Technical Support Contact Information

[www.moxa.com/support](http://www.moxa.com/support)

### **Moxa Americas**

Toll-free: 1-888-669-2872  
Tel: +1-714-528-6777  
Fax: +1-714-528-6778

### **Moxa Europe**

Tel: +49-89-3 70 03 99-0  
Fax: +49-89-3 70 03 99-99

### **Moxa India**

Tel: +91-80-4172-9088  
Fax: +91-80-4132-1045

### **Moxa China (Shanghai office)**

Toll-free: 800-820-5036  
Tel: +86-21-5258-9955  
Fax: +86-21-5258-5505

### **Moxa Asia-Pacific**

Tel: +886-2-8919-1230  
Fax: +886-2-8919-1231

# Table of Contents

<b>1. Introduction</b>	<b>1-1</b>
Overview	1-2
Package Checklist	1-2
Product Features	1-2
Product Specifications	1-3
Functional Design	1-7
LED Indicators	1-7
Beeper	1-8
Reset Button	1-8
Relay (Digital Output)	1-9
<b>2. Getting Started</b>	<b>2-1</b>
First-Time Installation and Configuration	2-2
Communication Testing	2-3
Function Map	2-5
<b>3. Web Console Configuration</b>	<b>3-1</b>
Web Browser Configuration	3-2
Overview	3-3
Basic Settings	3-4
System Info Settings	3-4
Network Settings	3-5
Time Settings	3-6
Wireless Settings	3-7
Operation Mode	3-8
Basic Wireless Settings	3-8
WLAN Security Settings	3-11
Advanced Wireless Settings	3-17
WLAN Certification Settings (for EAP-TLS in Client mode only)	3-20
Advanced Settings	3-21
Using Virtual LAN	3-21
Configuring Virtual LAN	3-22
DHCP Server (for AP mode only)	3-23
Packet Filters	3-25
RSTP Settings (for WDS, Master, or Slave only)	3-28
SNMP Agent	3-29
Link Fault Pass-Through (for Client/Slave mode only)	3-32
Auto Warning Settings	3-32
System Log	3-32
Syslog	3-33
E-mail	3-34
Relay	3-35
Trap	3-36
Status	3-38
Wireless Status	3-38
Associated Client List (for AP/master mode only)	3-39
DHCP Client List (for AP mode only)	3-39
System Log	3-40
Relay Status	3-40
DI and Power Status	3-41
System Status	3-41
Network Status	3-42
Maintenance	3-43
Console Settings	3-43
Ping	3-43
Firmware Upgrade	3-44
Importing and Exporting Configuration Settings	3-44
Load Factory Default	3-45
Password	3-45
Misc. Settings	3-45
Save Configuration	3-46
Restart	3-46
Logout	3-47
<b>4. Software Installation and Configuration</b>	<b>4-1</b>
Overview	4-2
Wireless Search Utility	4-2
Installing Wireless Search Utility	4-2
Configuring the Wireless Search Utility	4-5
<b>5. Other Console Considerations</b>	<b>5-1</b>

RS-232 Console Configuration (115200, None, 8, 1, VT100) .....	5-2
Configuration by Telnet and SSH Consoles .....	5-3
Configuration by Web Browser with HTTPS/SSL .....	5-4
Disabling Telnet and Browser Access .....	5-5
<b>A. References .....</b>	<b>A-1</b>
Wireless Distribution System (WDS) .....	A-2
Beacon .....	A-3
DTIM .....	A-3
Fragment .....	A-3
RTS Threshold .....	A-3
STP and RSTP .....	A-4
The STP/RSTP Concept .....	A-4
Differences between RSTP and STP .....	A-4
<b>B. Supporting Information .....</b>	<b>B-1</b>
About This User's Manual .....	B-2
DoC (Declaration of Conformity) .....	B-2
Federal Communication Commission Interference Statement .....	B-2
R&TTE Compliance Statement .....	B-3
Firmware Recovery .....	B-4

## Introduction

---

Moxa's AirWorks AWK-3121 enables wireless access to network resources. The AWK-3121 is rated to operate at temperatures ranging from -40 to 75°C and is rugged enough for any harsh industrial environment.

The following topics are covered in this chapter:

- ❑ **Overview**
- ❑ **Package Checklist**
- ❑ **Product Features**
- ❑ **Product Specifications**
- ❑ **Functional Design**
  - LED Indicators
  - Beeper
  - Reset Button
  - Relay (Digital Output)

## Overview

The AWK-3121 Access Point is ideal for applications that are hard-to-wire, too expensive to wire, or use mobile equipment that connects to a TCP/IP network. The AWK-3121 can operate at temperatures range of -40 to 75°C and is rugged enough for any harsh industrial environment. Installation is easy, with either DIN-rail mounting or wall mounting in distribution boxes. The DIN-rail/wall mounting capability, wide operating temperature range, and IP30 housing with LED indicators make the AWK-3121 a convenient yet reliable solution for any industrial wireless application.

## Package Checklist

Moxa's AWK-3121 is shipped with the following items. If any of these items is missing or damaged, please contact your customer service representative for assistance.

- AWK-3121
- 2 Dual-band Omnidirectional Antennas (2dBi, RP-SMA, 2.4 and 5 GHz)
- Cable holder with 1 screw
- 2 Protective caps
- Quick Installation Guide (printed)
- Warranty Card

**NOTE** The above items come with the standard AWK-3121 model, but the package contents may vary for customized versions.

## Product Features

- IEEE802.11a/b/g compliant
- Three-in-one design (AP/Bridge/Client)
- Advanced wireless security:
  - 64-bit and 128-bit WEP encryption, WPA /WPA2-Personal and Enterprise (IEEE 802.1X/RADIUS, TKIP, and AES)
  - SSID enable/disable
  - Packet access control and filtering
- STP/RSTP support for network system redundancy (for Master and Slave mode only)
- Long-distance transmission support
- Turbo Roaming enables rapid handover (for Client mode only)
- ABC-01 for configuration import/export
- Dedicated antenna selection
- Free firmware update for more advanced functions
- RS-232 console management
- 2DI+1DO for onsite monitoring and warning
- Wide -40 to 75°C operating temperature range (-T model)
- Redundant 24 VDC power inputs or IEEE802.3af Power over Ethernet
- DIN-rail or wall mounting
- IP30-rated high-strength metal housing

# Product Specifications

## WLAN Interface

### Standards:

IEEE 802.11a/b/g for Wireless LAN  
IEEE 802.11i for Wireless Security  
IEEE 802.3u for 10/100BaseT(X)  
IEEE 802.3af for Power-over-Ethernet  
IEEE 802.1D for Spanning Tree Protocol  
IEEE 802.1w for Rapid STP  
IEEE 802.1Q VLAN

### Spread Spectrum and Modulation (typical):

- DSSS with DBPSK, DQPSK, CCK
- OFDM with BPSK, QPSK, 16QAM, 64QAM
- 802.11b: CCK @ 11/5.5 Mbps, DQPSK @ 2 Mbps, DBPSK @ 11 Mbps
- 802.11a/g: 64QAM @ 54/48 Mbps, 16QAM @ 36/24 Mbps, QPSK @ 18/12 Mbps, BPSK @ 9/6 Mbps

### Operating Channels (central frequency):

US:

2.412 to 2.462 GHz (11 channels)  
5.18 to 5.24 GHz (4 channels)

EU:

2.412 to 2.472 GHz (13 channels)  
5.18 to 5.24 GHz (4 channels)

JP:

2.412 to 2.472 GHz (13 channels, OFDM)  
2.412 to 2.484 GHz (14 channels, DSSS)  
5.18 to 5.24 GHz (4 channels for W52)

### Security:

- SSID broadcast enable/disable
- Firewall for MAC/IP/Protocol/Port-based filtering
- 64-bit and 128-bit WEP encryption, WPA /WPA2-Personal and Enterprise (IEEE 802.1X/RADIUS, TKIP and AES)

### Transmission Rates:

802.11b: 1, 2, 5.5, 11 Mbps  
802.11a/g: 6, 9, 12, 18, 24, 36, 48, 54 Mbps

### TX Transmit Power (for hardware revision 1.2):

802.11b:

Typ. 23±1.5 dBm @ 1 to 11 Mbps

802.11g:

Typ. 20±1.5 dBm @ 6 to 24 Mbps  
Typ. 19±1.5 dBm @ 36 Mbps  
Typ. 18±1.5 dBm @ 48 Mbps  
Typ. 17±1.5 dBm @ 54 Mbps

802.11a:

Typ. 18±1.5 dBm @ 6 to 24 Mbps  
Typ. 16±1.5 dBm @ 36 to 48 Mbps  
Typ. 15±1.5 dBm @ 54 Mbps

**RX Sensitivity (for hardware revision 1.2):**

802.11b:

- 97 dBm @ 1 Mbps
- 94 dBm @ 2 Mbps
- 92 dBm @ 5.5 Mbps
- 90 dBm @ 11 Mbps

802.11g:

- 93 dBm @ 6 Mbps
- 91 dBm @ 9 Mbps
- 90 dBm @ 12 Mbps
- 88 dBm @ 18 Mbps
- 84 dBm @ 24 Mbps
- 80 dBm @ 36 Mbps
- 76 dBm @ 48 Mbps
- 74 dBm @ 54 Mbps

802.11a:

- 90 dBm @ 6 Mbps
- 89 dBm @ 9 Mbps
- 89 dBm @ 12 Mbps
- 85 dBm @ 18 Mbps
- 83 dBm @ 24 Mbps
- 79 dBm @ 36 Mbps
- 75 dBm @ 48 Mbps
- 74 dBm @ 54 Mbps

**TX Transmit Power (for hardware revisions 1.0 and 1.1):**

802.11b:

- Typ.  $18 \pm 1.5$  dBm @ 1 to 11 Mbps

802.11g:

- Typ.  $18 \pm 1.5$  dBm @ 6 to 24 Mbps
- Typ.  $16 \pm 1.5$  dBm @ 36 to 48 Mbps
- Typ.  $15 \pm 1.5$  dBm @ 54 Mbps

802.11a:

- Typ.  $16 \pm 1.5$  dBm @ 6 to 24 Mbps
- Typ.  $14 \pm 1.5$  dBm @ 36 to 48 Mbps
- Typ.  $13 \pm 1.5$  dBm @ 54 Mbps



**RX Sensitivity (for hardware revisions 1.0 and 1.1):**

802.11b:

- 92 dBm @ 1 Mbps
- 90 dBm @ 2 Mbps
- 88 dBm @ 5.5 Mbps
- 84 dBm @ 11 Mbps

802.11g:

- 87 dBm @ 6 Mbps
- 86 dBm @ 9 Mbps
- 85 dBm @ 12 Mbps
- 82 dBm @ 18 Mbps
- 80 dBm @ 24 Mbps
- 76 dBm @ 36 Mbps
- 72 dBm @ 48 Mbps
- 70 dBm @ 54 Mbps

802.11a:

- 87 dBm @ 6 Mbps
- 86 dBm @ 9 Mbps
- 85 dBm @ 12 Mbps
- 82 dBm @ 18 Mbps
- 80 dBm @ 24 Mbps
- 76 dBm @ 36 Mbps
- 72 dBm @ 48 Mbps
- 70 dBm @ 54 Mbps

**Protocol Support****General Protocols:** Proxy ARP, DNS, HTTP, HTTPS, IP, ICMP, SNMP, TCP, UDP, RADIUS, SNMP, PPPoE, DHCP**AP-only Protocols:** ARP, BOOTP, DHCP, dynamic VLAN-Tags for 802.1X-Clients, STP/RSTP (IEEE 802.1D/w)**Interface****Default Antenna:** 2 dBi dual-band omni-directional antenna, RP-SMA (male)**Connector for External Antennas:** RP-SMA (female)**LAN Ports:** 1, 10/100BaseT(X), auto negotiation speed (RJ45-type)**Console for External Antenna:** RS-232 (RJ45-type)**LED Indicators:** PWR1, PWR2, PoE (discontinued starting with HW Rev 2.0.0), FAULT, STATE, signal strength, CLIENT MODE, BRIDGE MODE, WLAN, 10M, 100M**Alarm Contact:** 1 relay output with current carrying capacity of 1 A @ 24 VDC**Digital Inputs:** 2 electrically isolated inputs

- +13 to +30 V for state "1"
- +3 to -30 V for state "0"
- Max. input current: 8 mA

**Physical Characteristics****Housing:** Metal, providing IP30 protection**Weight:** 850 g**Dimensions:** 53.6 x 135 x 105 mm (2.11 x 5.31 x 4.13 in)**Installation:** DIN-rail mounting, wall mounting (with optional kit)**Environmental Limits****Operating Temperature:**

Standard Models: -25 to 60°C (32 to 140°F)

Wide Temp. Models: -40 to 75°C (-40 to 167°F)

**Storage Temperature:** -40 to 85°C (-40 to 185°F)**Ambient Relative Humidity:** 5% to 95% (non-condensing)**Power Requirements****Input Voltage:** 12 to 48 VDC, redundant dual DC power inputs or 48 VDC Power-over-Ethernet (IEEE 802.3af compliant)

**Connector:** 10-pin removable terminal block

**Power Consumption:**

- 0.121 to 0.494 A @ 12 to 48 VDC
- 0.3 A @ 24 VDC

**Reverse Polarity Protection:** Present

**Regulatory Approvals**

**Safety:** EN60950-1, UL60950-1

**Radio:** EN300 328, EN301 893, TELEC

**EMC:** EN301 489-1/-17, FCC Part 15, EN55022/55024, IEC61000-6-2/-4

**Transportation:** Directive 72/245/EEC (for e/E-mark)

**Hazardous Location:** UL/cUL Class I, Div. 2; ATEX Class I, Zone 2

**Note:** Please check Moxa's website for the most up-to-date certification status.

**Warranty**

**Warranty Period:** 5 years

**Details:** See [www.moxa.com/warranty](http://www.moxa.com/warranty)



**ATTENTION**

For EXPLOSION-PROOF application, the AWK-3121 are designed and certified to meet the requirements of CID2 and ATEX, and shall be mounted in a suitable enclosure rate to at least IP54 and Pollution Degree 2 as defined in EN60529 and used within its rated electrical and environmental ratings.



**ATTENTION**

- The AWK-3121 is NOT a portable mobile device and should be located at least 20 cm away from the human body.
- The AWK-3121 is NOT designed for the general public. A well-trained technician should be enlisted to ensure safe deployment of AWK-3121 units, and to establish a wireless network.

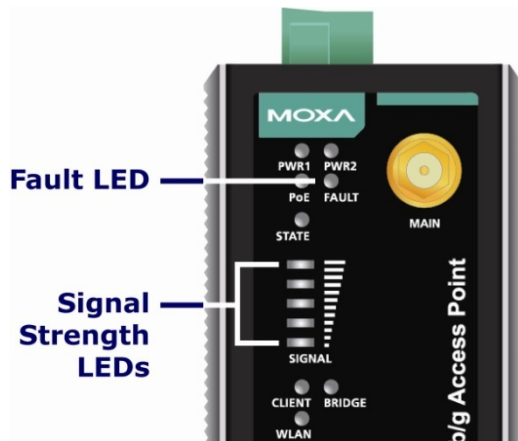
Patent [http://www.moxa.com/doc/operations/Moxa\\_Patent\\_Marking.pdf](http://www.moxa.com/doc/operations/Moxa_Patent_Marking.pdf)

# Functional Design

## LED Indicators

The LEDs on the front panel of the AWK-3121 provide a quick and easy means of determining the current operational status and wireless settings.

The **FAULT** LED indicates system failures and user-configured events. If the AWK-3121 cannot retrieve the IP address from a DHCP server, the **FAULT** LED will blink at one second intervals. The **SIGNAL** LEDs indicate signal strength, and only operate in **Client** mode.



The following table summarizes how to read the device's wireless settings from the LED displays. More information is available in Chapter 3 in the "Basic Wireless Settings" section.

LED	Color	State	Description
<b>Front Panel LED Indicators (System)</b>			
<b>PWR1</b>	Green	On	Power is being supplied from power input 1.
		Off	Power is <b>not</b> being supplied from power input 1.
<b>PWR2</b>	Green	On	Power is being supplied from power input 2.
		Off	Power is <b>not</b> being supplied from power input 2.
<b>PoE</b> (discontinued starting with HW Rev 2.0.0)	Amber	On	Power is being supplied via PoE.
		Off	Power is not being supplied via PoE.
<b>FAULT</b>	Red	Blinking slowly at 1-sec intervals	Cannot get an IP address from the DHCP server
		Blinking fast at 0.5-sec intervals	IP address conflict
		Off	Error condition does not exist.
<b>STATE</b>	Green/ Red	Green	Software Ready
		Green Blinking fast at 1-sec intervals	The AWK has been located by AWK Search Utility
		Red	Booting error condition
<b>SIGNAL</b> (5 LEDs)	Green	On	Signal level(for <b>Client/Slave</b> mode only)
		Off	

LED	Color	State	Description
<b>BRIDGE</b>	Green	On	WLAN function is in Bridge(WDS) Mode.
		Off	WLAN is not in Bridge(WDS) Mode.
<b>CLIENT</b>	Green	On	WLAN function is in Client/Slave mode and AWK has established a link with an AP.
		Blink	WLAN data communication is run in Client/Slave mode
		Off	WLAN is not in Client Mode or AWK has not established a link with an AP.
<b>WLAN</b>	Amber	On	WLAN functions in AP/Bridge/Master mode.
		Blink	WLAN's data communication is run in AP/Bridge/Master mode
		Off	WLAN is not in use or not working properly
<b>TP Port LED Indicators (Port Interface)</b>			
<b>100M</b>	Green	On	TP port's 100 Mbps link is <b>active</b> .
		Blink	Data is being transmitted at 100 Mbps
		Off	TP port's 100 Mbps link is <b>inactive</b> .
<b>10M</b>	Amber	On	TP port's 10 Mbps link is <b>active</b> .
		Blink	Data is being transmitted at 10 Mbps
		Off	TP port's 100 Mbps link is <b>inactive</b> .



### ATTENTION

The **FAULT**, **SIGNAL**, **CLIENT**, **BRIDGE**, and **WLAN** LEDs lighting up simultaneously and blinking at one-second intervals indicates that the system has failed to boot. This may be due to improper operation or issues such as an unexpected shutdown during firmware update. Instructions on how to recover the firmware can be found in Chapter 6 in the "Firmware Recovery" section.

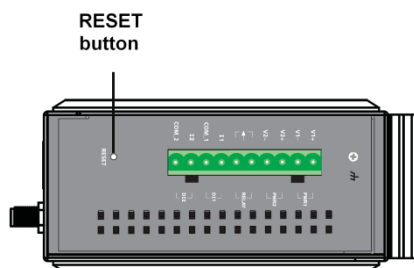
## Beeper

The beeper emits two short beeps when the system is ready.

## Reset Button

The **RESET** button is located on the top panel of the AWK-3121. You can reboot the AWK-3121 or reset it to factory default settings by pressing the **RESET** button with a pointed object such as an unfolded paper clip.

- **System reboot:** Hold the RESET button down for under 5 seconds and then release.
- **Reset to factory default:** Hold the RESET button down for *over* 5 seconds until the **STATE** LED starts blinking green. Release the button to reset the AWK-3121.



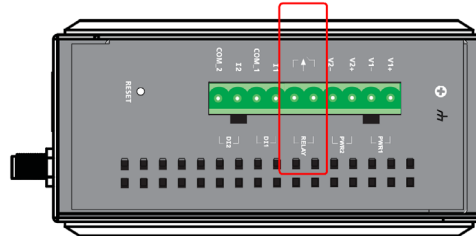
## Relay (Digital Output)

The AWK-3121 has one relay output consisting of the 2 terminal block contacts on the top panel, as shown below. These relay contacts are used to forward system failures and user-configured events.

The two wires attached to the relay contacts form an open circuit when a user-configured event is triggered. If a user-configured event does not occur, the relay circuit will remain closed. For safety reasons, the relay circuit is kept open when the AWK-3121 is not powered up.

### Summary of the AWK-3121's Relay Status

Power Status	Event	Relay
Off	-	Open
On	Yes	Open
	No	Short



## Getting Started

---

This chapter explains how to install Moxa's AirWorks AWK-3121 for the first time, and quickly set up your wireless network and test whether the connection is running well. The function guide provides a convenient means of determining which functions you need to use.

The following topics are covered in this chapter:

- ❑ **First-Time Installation and Configuration**
- ❑ **Communication Testing**
- ❑ **Function Map**

# First-Time Installation and Configuration

Before installing the AWK-3121, make sure that all items in the Package Checklist are in the box. You will need access to a notebook computer or PC equipped with an Ethernet port. The AWK-3121 has a default IP address that must be used when connecting to the device for the first time.

- **Step 1: Select the power source.**

The AWK-3121 can be powered by a DC power input or PoE (discontinued starting with HW Rev 2.0.0). The AWK-3121 will use whichever power source you choose.

- **Step 2: Connect the AWK-3121 to a notebook or PC.**

Since the AWK-3121 supports MDI/MDI-X auto-sensing, you can use either a straight-through cable or crossover cable to connect the AWK-3121 to a computer. The LED indicator on the AWK-3121's LAN port will light up when a connection is established.

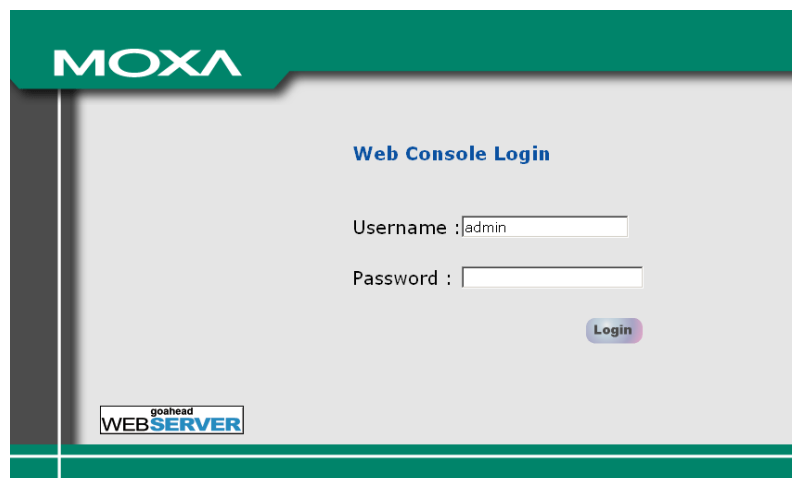
- **Step 3: Set up the computer's IP address.**

Choose an IP address on the same subnet as the AWK-3121. Since the AWK-3121's default IP address is **192.168.127.253**, and the subnet mask is **255.255.255.0**, you should set the IP address of the computer to **192.168.127.xxx**.

**NOTE** After you select **Maintenance** → **Load Factory Default** and click the **Submit** button, the AWK-3121 will be reset to factory default settings and the IP address will be reset to **192.168.127.253**.

- **Step 4: Use the web-based manager to configure the AWK-3121**

Open your computer's web browser and type **http://192.168.127.253** in the address field to access the homepage of the web-based Network Manager. Before the homepage opens, you will need to enter the user name and password as shown in the following figure. For first-time configuration, enter the default user name and password and then click on the **Login** button:



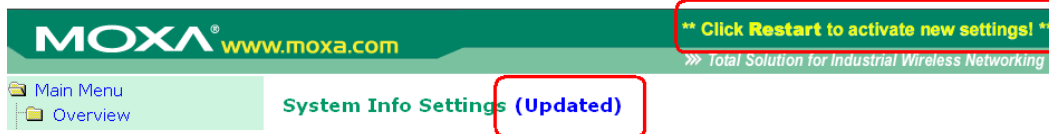
**NOTE** Default user name and password:

User Name: **admin**

Password: **root**

For security reasons, we strongly recommend changing the default password. To do so, select **Maintenance** → **Password**, and then follow the on-screen instructions to change the password.

**NOTE** After you click **Submit** to apply changes the web page will refresh (**Updated**) will appear on the page and a blinking reminder will be shown on the upper-right corner of the web page:



To activate the changes click **Restart** and then **Save and Restart** after you change the settings. About 30 seconds are needed for the AWK-3121 to complete the reboot procedure.

- **Step 5: Select the AWK-3121 operation mode.**

By default, the AWK-3121's operation mode is set to AP. You can change to Client mode in **Wireless Settings** → **Basic Wireless Settings**. Detailed information about configuring the AWK-3121's operation can be found in Chapter 3.

- **Step 6: Test communications.**

In the following sections we describe two test methods that can be used to ensure that a network connection has been established.

## Communication Testing

After installing the AWK-3121 you can run a sample test to make sure the AWK-3121 and wireless connection are functioning normally. Two testing methods are described below. Use the first method if you are using only one AWK-3121 device, and use the second method if you are using two or more AWK-3121 units.

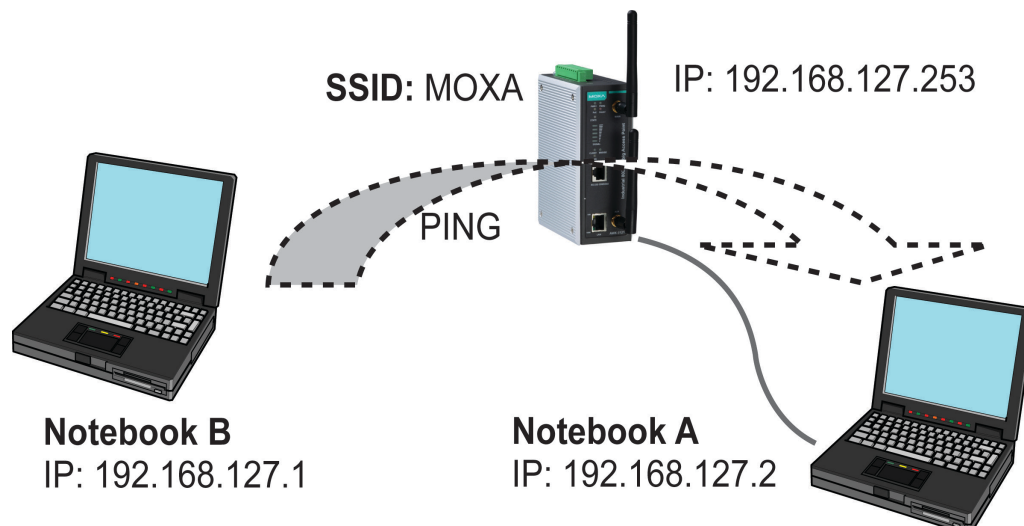
### How to Test One AWK-3121

If you are only using one AWK-3121, you will need a second notebook computer equipped with a WLAN card. Configure the WLAN card to connect to the AWK-3121 (NOTE: the default SSID is **MOXA**), and change the IP address of the second notebook (Notebook B) so that it is on the same subnet as the first notebook (Notebook A), which is connected to the AWK-3121.

After configuring the WLAN card, establish a wireless connection with the AWK-3121 and open a DOS window on Notebook B. At the prompt, type

**ping** <IP address of notebook A>

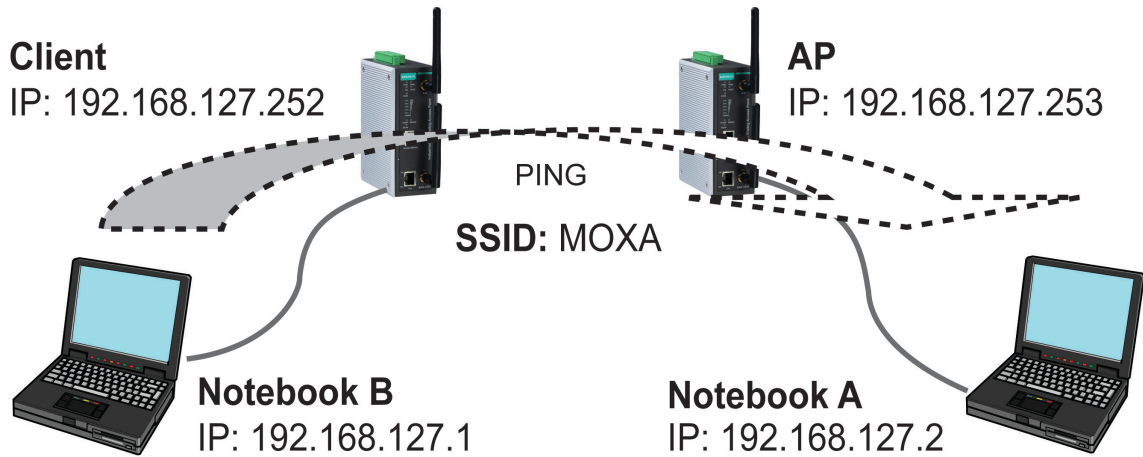
and then press **Enter** (see the figure below). A "Reply from IP address ..." response means the communication was successful. A "Request timed out." response means the communication failed. In this case, recheck the configuration to make sure the connections are correct.





## How to Test Two or More AWK-3121 Units

If you have two or more AWK-3121 units, you will need a second notebook computer (Notebook B) equipped with an Ethernet port. Use the default settings for the first AWK-3121 connected to notebook A and change the second or third AWK-3121 connected to notebook B to Client mode, and then configure the notebooks and AWK-3121 units properly.

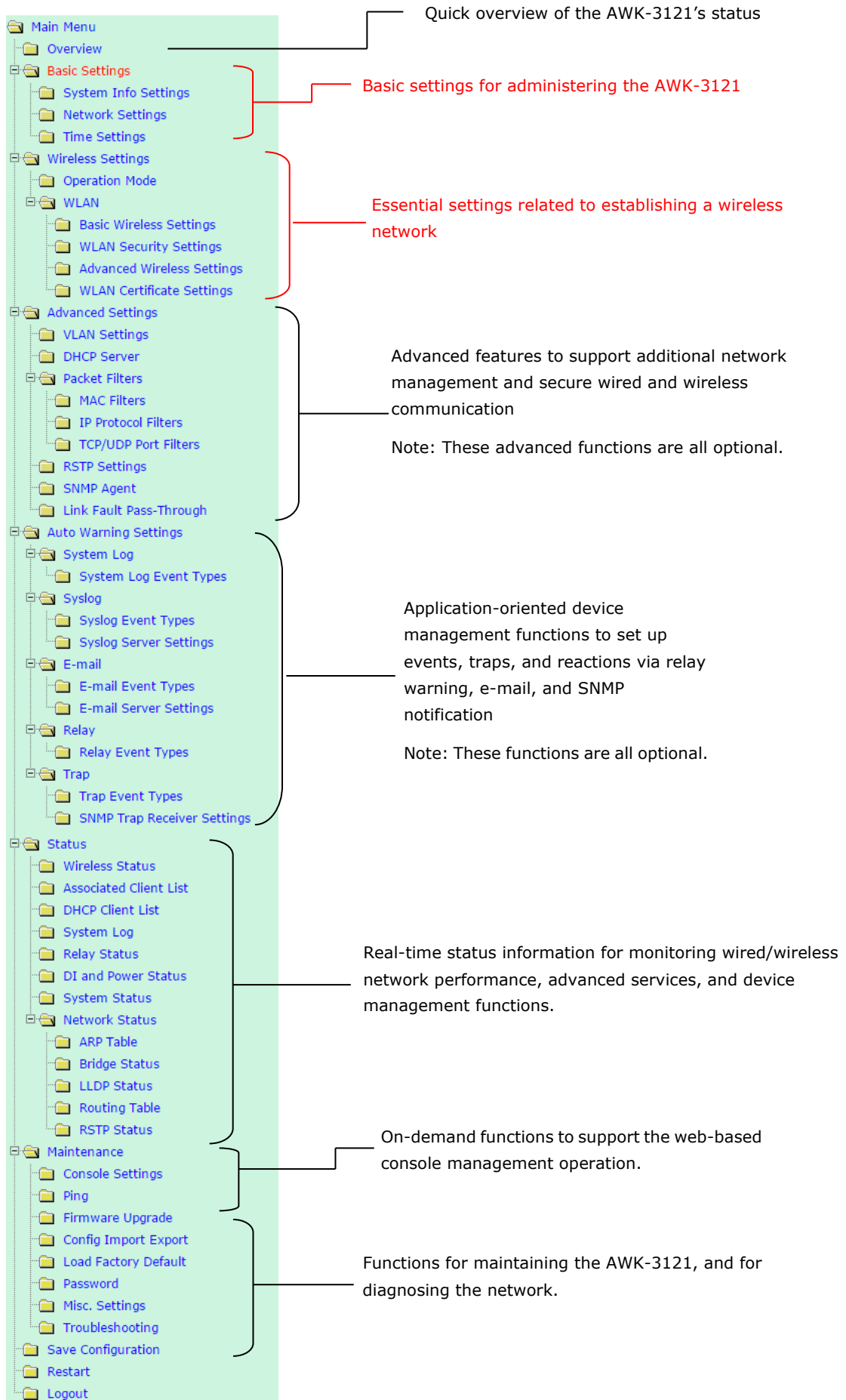


After setting up the testing environment, open a DOS window on notebook B. At the prompt, type:

```
ping <IP address of notebook A>
```

and then press **Enter**. A "Reply from IP address ..." response means the communication was successful. A "Request timed out" response means the communication failed. In this case, recheck the configuration to make sure the connections are correct.

# Function Map



# Web Console Configuration

---

In this chapter, we explain all aspects of web-based console configuration. Moxa's easy-to-use management functions help you set up your AWK-3121 and make it easy to establish and maintain your wireless network.

The following topics are covered in this chapter:

- ❑ **Web Browser Configuration**
- ❑ **Overview**
- ❑ **Basic Settings**
  - System Info Settings
  - Network Settings
  - Time Settings
- ❑ **Wireless Settings**
- ❑ **Operation Mode**
- ❑ **Basic Wireless Settings**
  - WLAN Security Settings
  - Advanced Wireless Settings
  - WLAN Certification Settings (for EAP-TLS in Client mode only)
- ❑ **Advanced Settings**
  - Using Virtual LAN
  - Configuring Virtual LAN
  - DHCP Server (for AP mode only)
  - Packet Filters
  - RSTP Settings (for WDS, Master, or Slave only)
  - SNMP Agent
  - Link Fault Pass-Through (for Client/Slave mode only)
- ❑ **Auto Warning Settings**
  - System Log
  - Syslog
  - E-mail
  - Relay
  - Trap
- ❑ **Status**
  - Wireless Status
  - Associated Client List (for AP/master mode only)
  - DHCP Client List (for AP mode only)
  - System Log
  - Relay Status
  - DI and Power Status
  - System Status
  - Network Status
- ❑ **Maintenance**
  - Console Settings
  - Ping
  - Firmware Upgrade
  - Importing and Exporting Configuration Settings
  - Load Factory Default
  - Password
  - Misc. Settings
- ❑ **Save Configuration**
- ❑ **Restart**
- ❑ **Logout**

# Web Browser Configuration

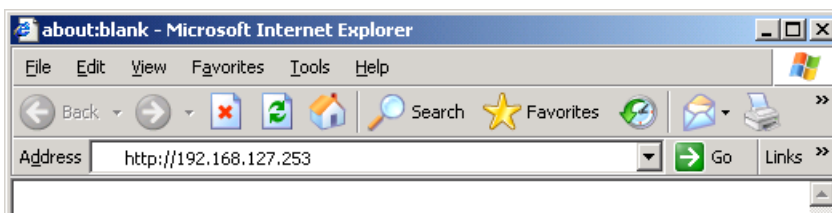
Moxa AWK-3121's web browser interface provides a convenient way to modify its configuration and access the built-in monitoring and network administration functions. The recommended web browser is Microsoft® Internet Explorer 7.0 or 8.0 with JVM (Java Virtual Machine) installed.

**NOTE** To use the AWK-3121's management and monitoring functions from a PC host connected to the same LAN as the AWK-3121, you must make sure that the PC host and the AWK-3121 are on the same logical subnet. Similarly, if the AWK-3121 is configured for other VLAN settings, you must make sure your PC host is on the management VLAN.

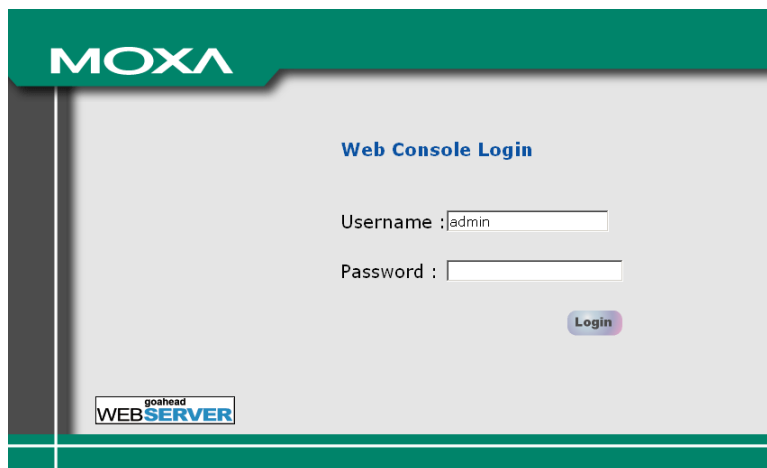
The Moxa AWK-3121's default IP is **192.168.127.253**.

Follow these steps to access the AWK-3121's web-based console management interface.

1. Open your web browser (e.g., Internet Explorer) and type the AWK-3121's IP address in the address field. Press **Enter** to establish the connection.

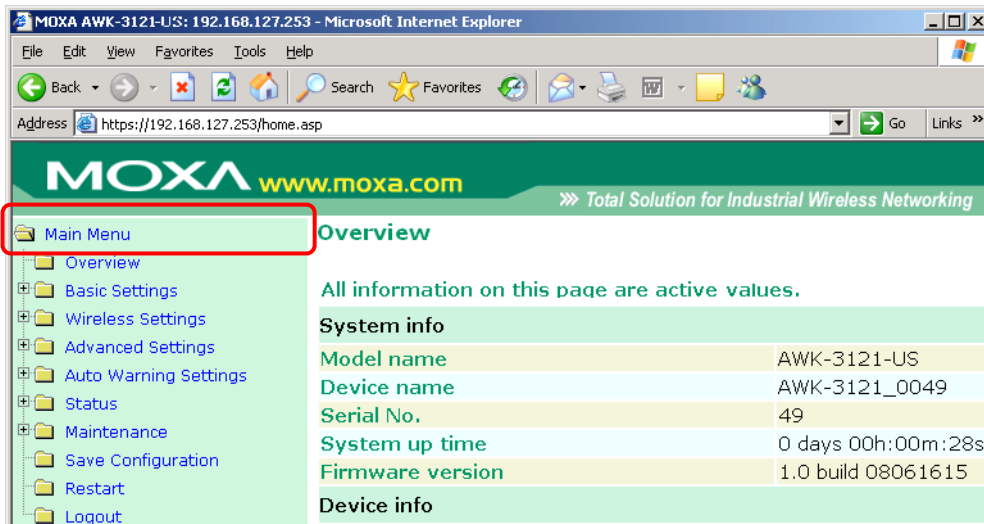


2. The Web Console Login page will open. Enter the password (default Username = **admin**; default Password = **root**) and then click **Login** to continue.



3. You may need to wait a few moments for the web page to download to your computer. Note that the Model name and IP address of your AWK-312 are both shown in the title bar of the web page. This information can be used to help you identify multiple AWK-3121 units.

4. Use the menu tree on the left side of the window to open the function pages to access each of the AWK-3121's functions.



In the following paragraphs, we describe each AWK-3121 management function in detail. A quick overview is available in this manual in the "Function Map" section of Chapter 2.

**NOTE** The model name of the AWK-3121 is shown as AWK-3121-XX, where XX indicates the country code. The country code indicates the AWK-3121 version and which bandwidth it uses. We use **AWK-3121-US** as an example in the following figures. (The country code and model name that appears on your computer screen may be different than the one shown here.)

**NOTE** For security reasons, you will need to log back into the AWK-3121 after a 5-minute time-out.

## Overview

The **Overview** page summarizes the AWK-3121's current status. This information is categorized into the groups: **System info**, **Device info**, and **802.11 info**.

Overview	
All information on this page are active values.	
System Info	
Model name	AWK-3121-US
Device name	AWK-3121_9547
Serial No.	9547
System up time	3 days 14h:01m:05s
Firmware version	1.10 Build 13082217
Device Info	
Device MAC address	00:90:E8:25:05:CB
IP address	192.168.127.253
Subnet mask	255.255.255.0
Gateway	
802.11 Info	
Country code	US
Operation mode	AP
Channel	6
RF type	B/G Mixed
SSID	MOXA

Click on **SSID** for more detailed 802.11 information, as shown in the following figure.

**Wireless Status**

Auto refresh

Show status of WLAN (SSID: MOXA)

**802.11 info**

Operation mode	Client
Channel	Not connected
RF type	B/G Mixed
SSID	MOXA
Security mode	OPEN
Current BSSID	N/A
Signal strength	▣▣▣▣ (-96dBm)
Transmission rate	N/A
Transmission power	Full

**NOTE** The **802.11 info** that is displayed may be different for different operation modes. For example, "Current BSSID" is not available in Client mode, and "Signal strength" is not available in AP mode.

## Basic Settings

The Basic Settings group includes the most commonly used settings required by administrators to maintain and control the AWK-3121.

## System Info Settings

The **System Info** items, especially **Device name** and **Device description**, are displayed and included on the **Overview** page, in SNMP information, and in alarm emails. Setting **System Info** items makes it easier to identify the different AWK-3121 units connected to your network.

**System Info Settings**

**Device name** AWK-3121\_9547

**Device location**

**Device description**

**Device contact information**

### Device name

Format	Description	Factory Default
Max. 31 of characters	This option is useful for specifying the role or application of different AWK-3121 units.	AWK-3121_<Serial No. of this AWK-3121>

### Device location

Format	Description	Factory Default
Max. of 31 characters	Specifies the location of different AWK-3121 units.	None

### Device description

Format	Description	Factory Default
Max. of 31 characters	Use this space to record a more detailed description of the AWK-3121	None

**Device contact information**

Format	Description	Factory Default
Max. of 31 characters	Provides information about whom to contact in order to resolve problems. Use this space to record contact information of the person responsible for maintaining this AWK-3121.	None

## Network Settings

The **Network Settings** configuration panel allows you to modify the usual TCP/IP network parameters. An explanation of each configuration item is given below.

**Network Settings**

**IP configuration** Static ▾

**IP address** DHCP

**Subnet mask**

**Gateway**

**Primary DNS server**

**Secondary DNS server**

**IP configuration**

Setting	Description	Factory Default
DHCP	The AWK-3121's IP address will be assigned automatically by the network's DHCP server	Static
Static	Set up the AWK-3121's IP address manually.	

**IP address**

Setting	Description	Factory Default
AWK-3121's IP address	Identifies the AWK-3121 on a TCP/IP network.	192.168.127.253

**Subnet mask**

Setting	Description	Factory Default
AWK-3121's subnet mask	Identifies the type of network to which the AWK-3121 is connected (e.g., 255.255.0.0 for a Class B network, or 255.255.255.0 for a Class C network).	255.255.255.0

**Gateway**

Setting	Description	Factory Default
AWK-3121's default gateway	The IP address of the router that connects the LAN to an outside network.	None

**Primary/ Secondary DNS server**

Setting	Description	Factory Default
IP address of the Primary/Secondary DNS server	The IP address of the DNS Server used by your network. After entering the DNS Server's IP address, you can input the AWK-3121's URL (e.g., http://ap11.abc.com) in your browser's address field instead of entering the IP address. The Secondary DNS server will be used if the Primary DNS server fails to connect.	None

## Time Settings

The AWK-3121 has a time calibration function based on information from an NTP server or user specified Date and Time information. Functions such as Auto warning can add real-time information to the message.

**Time Settings**

Date (YYYY/MM/DD) Time (HH:MM:SS)

Current local time  /  /   :  :

---

Time zone

Daylight saving time  Enable

Starts at     :  (HH:MM)

Stops at     :  (HH:MM)

Time offset

Time server 1

Time server 2

Query period  (600~9999 seconds)

The **Current local time** shows the AWK-3121's system time when you open this web page. You can click on the **Set Time** button to activate the updated date and time parameters. An "(Updated)" string will appear to indicate that the change is complete. Local time settings will be immediately activated in the system without running Save and Restart.

**NOTE** The AWK-3121 has a built-in real-time clock (RTC). We strongly recommend that users update the **Local time** for the AWK-3121 after the initial setup or a long-term shutdown, especially when the network does not have an Internet connection for accessing the NTP server or there is no NTP server on the LAN.

### Current local time

Setting	Description	Factory Default
User adjustable time	The date and time parameters allow configuration of the local time, with immediate activation. <i>Use 24-hour format: yyyy/mm/dd hh:mm:ss</i>	None

### Time zone

Setting	Description	Factory Default
User selectable time zone	The time zone setting allows conversion from GMT (Greenwich Mean Time) to local time.	GMT (Greenwich Mean Time)



### ATTENTION

Changing the time zone will automatically adjust the **Current local time**. You should configure the **Time zone** before setting the **Current local time**.

### Daylight saving time

Setting	Description	Factory Default
Enable/ Disable	Daylight saving time (also known as DST or summer time) involves advancing clocks (usually 1 hour) during the summer time to provide an extra hour of daylight in the afternoon.	Disable



When **Daylight saving time** is enabled, the following parameters will be shown:

- **Starts at:** The date that daylight saving time begins.
- **Stops at:** The date that daylight saving time ends.
- **Time offset:** Indicates how many hours forward the clock should be advanced.

#### **Time server 1/2**

Setting	Description	Factory Default
IP/Name of Time Server 1/2	IP or Domain name of the NTP time server. The 2nd NTP server will be used if the 1st NTP server fails to connect.	Time.nist.gov

#### **Query period**

Setting	Description	Factory Default
Query period time (1 to 9999 seconds)	This parameter determines how often the time is updated from the NTP server.	600 (seconds)

## Wireless Settings

The essential settings for wireless networks are presented in this function group. Settings must be properly set before establishing your wireless network. Familiarize yourself with the following terms before starting the configuration process:

**AP/Bridge:** This mode provides both Access Point and Static LAN-to-LAN Bridging functionality. The static LAN-to-LAN bridging function is supported by the Wireless Distribution System (WDS).

**Client:** This mode is for Dynamic LAN-to-LAN Bridging or Device-to-LAN scenarios. The Client automatically establishes bridge links with other APs.

In either AP/Bridge or Client mode, the AWK-3121 forwards packets between its Ethernet interface (LAN) and wireless interface (WLAN) to connect wired hosts on the Ethernet side with wireless host(s) on the wireless side. There are two types of wireless links specified by the IEEE802.11 standard:

- **STA-AP:** This type of wireless link is established between an IEEE802.11 Station (STA) and an IEEE802.11 Access Point (AP). An STA is usually a client computer (PC or PDA) with a WLAN network interface card (NIC). The Client mode is actually an STA.
- **WDS:** This type of wireless link is established between two IEEE802.11 APs. Wireless packets transmitted along the WDS link comply with the IEEE802.11 WDS (Wireless Distribution System) format at the link layer. Refer to the "Wireless Distribution System (WDS)" section in Chapter 5 for details. Keep in mind that WPA/WPA2 **CANNOT** be supported in WDS.

To establish a static bridge link based on the WDS, the APs at both end of the WDS link must be configured manually with each other's MAC addresses. To establish a dynamic bridge link between an AP and a Client, both devices must be configured with the same channel, and security settings (see "WLAN Security Settings" for details). Moreover, the same SSID is also needed for clients that roam the APs in Bridge mode. The Client automatically scans for any AP that is using the matched SSID and establishes a bridge link with the scanned AP.

When the AWK-3121 is configured for **Client** mode, it can be used as an Ethernet-to-wireless (or LAN-to-WLAN) network adapter. For example, a notebook computer equipped with an Ethernet adaptor but no wireless card can be connected to this device with an Ethernet cable to provide wireless connectivity to another AP.

<b>NOTE</b>	Although it is more convenient to use dynamic bridging, there is a limitation—the Client can only transmit IP-based packets between its wireless interface (WLAN) and Ethernet interface (LAN); other types of traffic (such as IPX and AppleTalk) are not forwarded.
-------------	---

# Operation Mode

The AWK-3121 supports four main operation modes—Client, AP, Master, and Slave—each of which plays a distinct role on the wireless network.

**Operation Mode**

**Wireless enable**  Enable  Disable

**Operation mode** AP ▼

AP  
 Client  
 Master  
 Slave

**Wireless Enable**

Setting	Description	Factory Default
Enable/Disable	The RF (Radio Frequency) module can be manually turned on or off. This function is available in AP operation mode only.	Enable

**Operation Mode**

Setting	Description	Factory Default
AP	The AWK-3121 plays the role of wireless AP/Bridge.	AP
Client	The AWK-3121 plays the role of wireless Client.	
Master	This mode collocates with AWK-5222/5232/6222/6232's Wireless bridge mode. The AWK-3121 plays the role of wireless Master.	
Slave	This mode collocates with AWK-5222/5232/6222/6232's Wireless bridge mode. The AWK-3121 plays the role of wireless Slave.	

# Basic Wireless Settings

The **WLAN Basic Setting Selection** panel is used to add and edit SSIDs. An SSID is a unique identifier that wireless networking devices use to establish and maintain wireless connectivity. Multiple access points on a network or sub-network can use the same SSIDs. You can configure your AWK to use up to 9 SSIDs, and configure each SSID differently. All of the SSIDs are active at the same time; that is, client devices can use any of the SSIDs to associate with the access point.

**WLAN Basic Setting Selection**

Status	SSID	Operation Mode	Action
Active	MOXA	AP	<input type="button" value="Edit"/>

Click on **Add SSID** to create more SSIDs.

Status	SSID	Operation Mode	Action
Active	MOXA	AP	<input type="button" value="Edit"/>
Inactive	<input style="width: 150px;" type="text"/>	AP	<input type="button" value="Save"/> <input type="button" value="Cancel"/>

Click on **Edit** to assign different configuration settings to each SSID. The configuration panel appears as follows:

**Basic Wireless Settings**

**Operation mode** Client

**RF type** B/G Mixed

**Channel** 6

**SSID** MOXA Site Survey

**SSID broadcast**  Enable  Disable

**WDS**  Enable  Disable

**NOTE** When you switch to **Client** mode, a **Site Survey** button will be available on the Basic Wireless Settings panel. Click the **Site Survey** button to view information about available APs, as shown in the following figure. You can click on the SSID of an entity and bring the value of its SSID onto the SSID field of the Basic Wireless Settings page. Click the **Refresh** button to re-scan and update the table.

**Basic Wireless Settings**

**Operation mode** Client

**RF type** B/G Mixed

**Channel** 6

**SSID** MOXA **Site Survey**

**SSID broadcast**  Enable  Disable

**WDS**  Enable  Disable

Site Survey - Internet Explorer

http://192.168.127.253/site\_survey.asp?index=1

No.	SSID	MAC address	Channel	Mode	Signal/Noise Floor
1	KEN_BT_BUGFIX	06:90:E8:11:22:34	36	BSS/WPA2/PSK	(-83dBm/-101dBm)
2	MHQ-NB	FC:F5:28:CB:5D:AB	6	BSS/WPA2/Enterprise	(-87dBm/-101dBm)
3	MHQ-Visitor	FE:F1:28:CB:5D:AB	6	BSS/OPEN	(-88dBm/-101dBm)
4	MHQ-Mobile	FE:F0:28:CB:5D:AB	6	BSS/WPA2/Enterprise	(-88dBm/-101dBm)
5	MOXA_CARL_TEST	06:90:E8:2B:5F:FA	6	BSS/WPA2/PSK	(-92dBm/-101dBm)
6	IW_2.4GHz	06:90:E8:45:42:C6	1	BSS/WPA2/PSK	(-94dBm/-101dBm)
7	MHQ-Visitor	FE:F1:28:CB:5D:90	11	BSS/OPEN	(-95dBm/-101dBm)
8	MHQ-Visitor	FE:F1:28:CB:5D:93	1	BSS/OPEN	(-95dBm/-101dBm)
9	MHQ-Mobile	FE:F0:28:CB:5D:93	1	BSS/WPA2/Enterprise	(-95dBm/-101dBm)
10	MHQ-NB	FC:F5:28:CB:5D:93	1	BSS/WPA2/Enterprise	(-95dBm/-101dBm)

Refresh Close

**NOTE** If the **Gateway** field in **Basic Settings** → **Network Settings** is empty, a warning message will appear, reminding you to set the default gateway when **Client** mode is enabled. You can ignore this message if you are only planning a local network and packets will not be sent outside the network.

**RF type**

Setting	Description	Factory Default
A	Supports IEEE802.11a standard only	B/G Mixed
B	Supports IEEE802.11b standard only	
G	Supports IEEE802.11g standard only	
B/G Mixed	Supports both of IEEE802.11b/g standards, but 802.11g can be slowed down when 802.11b clients are on the network	

**Channel (for AP/Master mode only)**

Setting	Description	Factory Default
Available channels vary with RF type	AWK-3121 plays a role of wireless AP.	6 (in B/G Mixed mode)

**SSID**

Setting	Description	Factory Default
Max. of 31 characters	The SSID of a client and the SSID of the AP must be identical for the client and AP to be able to communicate with each other.	MOXA

**SSID broadcast (for AP/Master mode only)**

Setting	Description	Factory Default
Enable/ Disable	SSID can be broadcast or not	Enable

**NOTE** The AWK-3121-JP (for Japanese frequency bands) only connects SSID-hidden APs in all IEEE802.11a channels and IEEE802.11g channels 1 to 11. The AWK-3121-EU (for European frequency bands) only connects SSID-hidden APs in all IEEE802.11b/g channels.

**WDS (for AP mode only)**

Setting	Description	Factory Default
Enable/Disable	AWK-3121 supports WDS or not.	Disable

**NOTE** When **WDS** is enabled, you can use a pure point-to-point WDS link by disabling **AP functionality**. The AWK-3121 provides 8 entities for WDS settings and can support up to 8 WDS links to other APs or wireless bridges. The list appears when WDS **Enable** is checked. Enter the MAC address to set up a WDS link. Remember to activate a WDS link by checking the **Active** check box.

<b>SSID broadcast</b>	<input checked="" type="radio"/> Enable	<input type="radio"/> Disable
<b>WDS</b>	<input checked="" type="radio"/> Enable	<input type="radio"/> Disable
<b>AP functionality</b>	<input checked="" type="radio"/> Enable	<input type="radio"/> Disable
<b>WDS Settings</b>		
<b>No</b>	<input type="checkbox"/> <b>Active</b>	<b>MAC address</b>
1 (WDS1)	<input type="checkbox"/>	<input type="text"/>
2 (WDS2)	<input type="checkbox"/>	<input type="text"/>
3 (WDS3)	<input type="checkbox"/>	<input type="text"/>
4 (WDS4)	<input type="checkbox"/>	<input type="text"/>

## WLAN Security Settings

The AWK-3121 provides four standardized wireless security modes: **Open**, **WEP** (Wired Equivalent Privacy), **WPA** (Wi-Fi Protected Access), and **WPA2**. Several security modes are available in the AWK-3121 by selecting **Security mode** and **WPA type**:

- **Open:** No authentication, no data encryption.
- **WEP:** Static WEP (Wired Equivalent Privacy) keys must be configured manually.
- **WPA/WPA2-Personal:** Also known as WPA/WPA2-PSK. You will need to specify the Pre-Shared Key in the **Passphrase** field, which will be used by the TKIP or AES engine as a master key to generate keys that actually encrypt outgoing packets and decrypt incoming packets.
- **WPA/WPA2-Enterprise:** Also called WPA/WPA2-EAP (Extensible Authentication Protocol). In addition to device-based authentication, WPA/WPA2-Enterprise enables user-based authentication via IEEE802.1X. The AWK-3121 can support three EAP methods: EAP-TLS, EAP-TTLS, and EAP-PEAP.

The screenshot shows a web console window titled "WLAN Security Settings". Under the heading "Security mode", there is a dropdown menu currently set to "Open". The dropdown menu is expanded, showing the following options: "Open", "WEP", "WPA", and "WPA2". Below the dropdown menu is a "Submit" button.

### Security mode

Setting	Description	Factory Default
Open	No authentication	Open
WEP	Static WEP is used	
WPA*	WPA is used	
WPA2*	Fully supports IEEE802.11i with "TKIP/AES + 802.1X"	

\*WPA and WPA2 are not supported in WDS (Bridge) mode.

### Open

For security reasons, you should **NOT** set security mode to Open System, since authentication and data encryption are **NOT** performed in Open System mode.

## WEP

According to the IEEE802.11 standard, WEP can be used for authentication and data encryption to maintain confidentiality. **Shared** (or **Shared Key**) authentication type is used if WEP authentication and data encryption are both needed. Normally, **Open** (or **Open System**) authentication type is used when WEP data encryption is run with authentication.

When WEP is enabled as a security mode, the length of a key (so-called WEP seed) can be specified as 64/128 bits, which is actually a 40/104-bit secret key with a 24-bit initialization vector. The AWK-3121 provides 4 entities of WEP key settings that can be selected to use with **Key index**. The selected key setting specifies the key to be used as a *send-key* for encrypting traffic from the AP side to the wireless client side. All 4 WEP keys are used as *receive-keys* to decrypt traffic from the wireless client side to the AP side.

The WEP key can be presented in two **Key types**, HEX and ASCII. Each ASCII character has 8 bits, so a 40-bit (or 64-bit) WEP key contains 5 characters, and a 104-bit (or 128-bit) key has 13 characters. In hex, each character uses 4 bits, so a 40-bit key has 10 hex characters, and a 128-bit key has 26 characters.

**WLAN Security Settings**

**Security mode**      WEP ▾

**Authentication type**      Open ▾

**Key type**      HEX ▾

**Key length**      64 bits ▾

**key index**      1 ▾

**WEP key 1**      ●●●●●●●●

**WEP key 2**     

**WEP key 3**     

**WEP key 4**

### Authentication type

Setting	Description	Factory Default
Open	Data encryption is enabled, but without authentication	Open
Shared	Data encryption and authentication are both enabled.	

### Key type

Setting	Description	Factory Default
HEX	Specifies WEP keys in hex-decimal number form	HEX
ASCII	Specifies WEP keys in ASCII form	

### Key length

Setting	Description	Factory Default
64 bits	Uses 40-bit secret keys with 24-bit initialization vector	64 bits
128 bits	Uses 104-bit secret key with 24-bit initialization vector	

### Key index

Setting	Description	Factory Default
1-4	Specifies which WEP key is used	Open

### WEP key 1-4

Setting	Description	Factory Default
ASCII type: 64 bits: 5 chars 128 bits: 13chars HEX type: 64 bits: 10 hex chars 128 bits: 26 hex chars	A string that can be used as a WEP seed for the RC4 encryption engine.	None

## WPA/WPA2-Personal

WPA (Wi-Fi Protected Access) and WPA2 provide significant improvements over the WEP encryption method. WPA is a security standard based on 802.11i draft 3, while WPA2 is based on the fully ratified version of 802.11i. The initial vector is transmitted, encrypted, and enhanced with its 48 bits, twice as long as WEP. The key is regularly changed so that true session is secured.

Even though AES encryption is only included in the WPA2 standard, it is widely available in the WPA security mode of some wireless APs and clients as well. The AWK-3121 also supports AES algorithms in WPA and WPA2 for better compatibility.

Personal versions of WPA/WPA2, also known as WPA/WPA-PSK (*Pre-Shared Key*), provide a simple way of encrypting a wireless connection for high confidentiality. A passphrase is used as a basis for encryption methods (or cipher types) in a WLAN connection. The passphrases should be complicated and as long as possible. There must be at least 8 ASCII characters in the passphrase, and it could go up to 63. For security reasons, this passphrase should only be disclosed to users who need it, and it should be changed regularly.

**WLAN Security Settings**

Security mode:

WPA type:

Encryption method:

Passphrase:

Key renewal:  (60~86400 second)

### WPA type

Setting	Description	Factory Default
Personal	Provides Pre-Shared Key-enabled WPA and WPA2	Personal
Enterprise	Provides enterprise-level security for WPA and WPA2	

### Encryption method

Setting	Description	Factory Default
TKIP	Temporal Key Integrity Protocol is enabled	AES
AES	Advance Encryption System is enabled	
Mixed*	Provides TKIP broadcast key and TKIP+AES unicast key for some legacy Client. This option is rarely used.	

\*This option is available in AP/Master mode only, and does not support AES-enabled clients.

### Passphrase

Setting	Description	Factory Default
8 to 63 characters	Master key to generate keys for encryption and decryption	None

### Key renewal (for AP/Master mode only)

Setting	Description	Factory Default
60 to 86400 seconds (1 minute to 1 day)	Specifies the time period of group key renewal	3600 (seconds)

**NOTE** The **key renewal** value dictates how often the wireless AP encryption keys should be changed. The security level is generally higher if you set the key renewal value to a shorter number, which forces the encryption keys to be changed more frequently. The default value is 3600 seconds (6 minutes). Longer time periods can be considered if the line is not very busy.

## WPA/WPA2-Enterprise (for AP/Master mode)

By setting **WPA type** to **Enterprise**, you can use **EAP** (*Extensible Authentication Protocol*), a framework authentication protocol used by 802.1X to provide network authentication. In these Enterprise-level security modes, a back-end RADIUS (Remote Authentication Dial-In User Service) server is needed if IEEE 802.1X functionality is enabled in WPA /WPA2. The IEEE 802.1X protocol also offers the possibility of carrying out an efficient connection authentication on a large-scale network. It is not necessary to exchange keys or passphrases.

**WLAN Security Settings**

**Security mode**

**WPA type**

**Encryption method**

**Primary RADIUS server IP**

**Primary RADIUS server port**

**Primary RADIUS shared key**

**Secondary RADIUS server IP**

**Secondary RADIUS server port**

**Secondary RADIUS shared key**

**Key renewal**  (60~86400 seconds)

### WPA type

Setting	Description	Factory Default
Personal	Provides Pre-Shared Key-enabled WPA and WPA2	Personal
Enterprise	Provides enterprise-level security for WPA and WPA2	

### Encryption method

Setting	Description	Factory Default
TKIP	Temporal Key Integrity Protocol is enabled	AES
AES	Advance Encryption System is enabled	
Mixed*	Provides TKIP broadcast key and TKIP+AES unicast key for some legacy Client. This option is rarely used.	

\*This option is available in AP/Master mode only, and cannot support AES-enabled clients.

### Primary/Secondary RADIUS server IP

Setting	Description	Factory Default
The IP address of RADIUS server	Specifies the delegated RADIUS server for EAP	None

### Primary/Secondary RADIUS port

Setting	Description	Factory Default
Port number	Specifies the port number of the delegated RADIUS server	1812

### Primary/ Secondary RADIUS shared key

Setting	Description	Factory Default
Max. of 31 characters	The secret key shared between AP and RADIUS server	None

### Key renewal

Setting	Description	Factory Default
60 to 86400 seconds (1 minute to 1 year)	Specifies the time period of group key renewal	3600 (seconds)



## WPA/WPA2-Enterprise (for Client/Slave mode)

When used as a client, the AWK-3121 can support three EAP methods (or **EAP protocols**): **EAP-TLS**, **EAP-TTLS**, and **EAP-PEAP**, corresponding to WPA/WPA-Enterprise settings on the AP side.

**WLAN Security Settings**

Security mode: WPA2

WPA type: Enterprise

Encryption method: TKIP

EAP Protocol: TLS

TLS  
 TTLS  
 PEAP

### Encryption method

Setting	Description	Factory Default
TKIP	Temporal Key Integrity Protocol is enabled	AES
AES	Advance Encryption System is enabled	

### EAP Protocol

Setting	Description	Factory Default
TLS	Specifies Transport Layer Security protocol	TLS
TTLS	Specifies Tunneled Transport Layer Security	
PEAP	Specifies Protected Extensible Authentication Protocol, or Protected EAP	

Before choosing the EAP protocol for your WPA/WPA2-Enterprise settings on the client end, please contact the network administrator to make sure the system supports the protocol on the AP end. Detailed information on these three popular EAP protocols is presented in the following sections.

## EAP-TLS

TLS is the standards-based successor to Secure Socket Layer (SSL). It can establish a trusted communication channel over a distrusted network. TLS provides mutual authentication through certificate exchange. EAP-TLS is also secure to use. You are required to submit a digital certificate to the authentication server for validation, but the authentication server must also supply a certificate.

You can use **Basic Wireless Settings** → **WLAN Certificate Settings** to import your WLAN certificate and enable EAP-TLS on the client end.

**WLAN Security Settings**

Security mode: WPA2

WPA type: Enterprise

Encryption method: TKIP

EAP Protocol: TLS

Certificate issued to

Certificate issued by

Certificate expiration date

You can check the current certificate status in **Current Status** if it is available.

- **Certificate issued to:** Shows the certificate user
- **Certificate issued by:** Shows the certificate issuer
- **Certificate expiration date:** Indicates the expiry date of the certificate

## EAP-TTLS

It is usually much easier to re-use existing authentication systems, such as a Windows domain or Active Directory, LDAP directory, or Kerberos realm, rather than creating a parallel authentication system. As a result, TTLS (Tunneled TLS) and PEAP (Protected EAP) are used to support the use of so-called “legacy authentication methods.”

TTLS and PEAP work in a similar way. First, they establish a TLS tunnel (EAP-TLS for example), and validate whether the network is trustworthy with digital certificates on the authentication server. This step establishes a tunnel that protects the next step (or “inner” authentication), and consequently is sometimes referred to as “outer” authentication. The TLS tunnel is then used to encrypt an older authentication protocol that authenticates the user for the network.

As you can see, digital certificates are still needed for outer authentication in a simplified form. Only a small number of certificates are required, which can be generated by a small certificate authority. Certificate reduction makes TTLS and PEAP much more popular than EAP-TLS.

The AWK-3121 provides some non-cryptographic EAP methods, including **PAP**, **CHAP**, **MS-CHAP**, and **MS-CHAP-V2**. These EAP methods are not recommended for direct use on wireless networks. However, they may be useful as inner authentication methods with TTLS and PEAP.

Because the inner and outer authentications can use distinct user names in TTLS and PEAP, you can use an anonymous user name for the outer authentication, with the true user name only shown through the encrypted channel. Keep in mind that not all client software supports anonymous alteration. Confirm this with the network administrator before you enable identity hiding in TTLS and PEAP.

**WLAN Security Settings**

Security mode: WPA2

WPA type: Enterprise

Encryption method: TKIP

EAP Protocol: TTLS

TTLS Inner Authentication: MS-CHAP-V2

Anonymous:

User name:

Password:

### TTLS Inner Authentication

Setting	Description	Factory Default
PAP	Password Authentication Protocol is used	MS-CHAP-V2
CHAP	Challenge Handshake Authentication Protocol is used	
MS-CHAP	Microsoft CHAP is used	
MS-CHAP-V2	Microsoft CHAP version 2 is used	

### Anonymous

Setting	Description	Factory Default
Max. of 31 characters	A distinct name used for outer authentication	None

### User name & Password

Setting	Description	Factory Default
	User name and password used in inner authentication	None

## PEAP

There are a few differences in the TTLS and PEAP inner authentication procedures. TTLS uses the encrypted channel to exchange attribute-value pairs (AVPs), while PEAP uses the encrypted channel to start a second EAP exchange inside of the tunnel. The AWK-3121 provides **MS-CHAP-V2** merely as an EAP method for inner authentication.

**WLAN Security Settings**

Security mode: WPA2

WPA type: Enterprise

Encryption method: TKIP

EAP Protocol: PEAP

Inner EAP protocol: MS-CHAP-V2

Anonymous:

User name:

Password:

### Inner EAP protocol

Setting	Description	Factory Default
MS-CHAP-V2	Microsoft CHAP version 2 is used	MS-CHAP-V2

### Anonymous

Setting	Description	Factory Default
Max. of 31 characters	A distinct name used for outer authentication	None

### User name & Password

Setting	Description	Factory Default
	User name and password used in inner authentication	None

## Advanced Wireless Settings

Additional wireless-related parameters are presented in this section to help you set up your wireless network in detail.

### Advanced Wireless Settings

Transmission rate: Auto

Transmission power: 12 dBm

Minimum transmission rate: 0 (0~11Mbps, 0 to disable)

Beacon interval: 100 (40~1000ms)

DTIM interval: 1 (1~15)

Inactive timeout: 60 (1~240 second)

Fragmentation threshold: 2346 (256~2346)

RTS threshold: 2346 (256~2346)

Transmission distance: 500 (500 ~ 11000m)

Noise protection: Disable

Antenna: Auto

EAPOL version: 1

WMM: Enable

Full 11a channel support: Disable

Turbo roaming:  Enable

**Transmission Rate**

Setting	Description	Factory Default
Auto	The AWK-3121 senses and adjusts the data rate automatically	Auto
Available rates	Users can manually select a target transmission data rate	

**Transmission Power**

Setting	Description	Factory Default
Available Transmission Power	Specifies wireless signal coverage by automatically selecting the strength of Tx power	12 dBm

**RF type Vs. Transmission Power Range**

Setting	Description	Factory Default
A	1~17 dBm	12 dBm
B	1~22 dBm	
G	1~22 dBm	
B/G Mixed	1~22 dBm	

**Beacon Interval (for AP/Master mode only)**

Setting	Description	Factory Default
Beacon Interval (40 to 1000 ms)	Indicates the frequency interval of the beacon	100 (ms)

**DTIM Interval (for AP/Master mode only)**

Setting	Description	Factory Default
Data Beacon Rate (1 to 15)	Indicates how often the AWK-3121 sends out a Delivery Traffic Indication Message	1

**Fragmentation threshold**

Setting	Description	Factory Default
Fragment Length (256 to 2346)	Specifies the maximum size a data packet before splitting and creating another new packet	2346

**RTS threshold**

Setting	Description	Factory Default
RTS/CTS Threshold (256 to 2346)	Determines how large a packet can be before the Access Point coordinates transmission and reception to ensure efficient communication	2346

**NOTE** You can refer to the related glossaries in Chapter 5 for detailed information about the above-mentioned settings. By setting these parameters properly, you can better tune the performance of your wireless network.

**Transmission distance**

Setting	Description	Factory Default
Distance or max. range for transmission (500 to 11000 m)	Specifies the transmission distance or max. range between two AWK devices. This parameter should be set properly, especially for long-distance communication.	500

**Noise protection**

Setting	Description	Factory Default
Enable/Disable	Adjusts the interference coping capability of the wireless signal. This option should be enabled for communication distance under 500 meters, and should be disabled for communication distances over 500 meters.	Disable

**NOTE** Make sure the same **Transmission distance** parameters are set in both **AP** and **Client** sides, and both **Bridges**. When this parameter is greater than 500, an optimal algorithm will be enabled to support long-distance transmission.

#### **Antenna**

Setting	Description	Factory Default
Auto	The AWK-3121 uses two antennas (MAIN and AUX) and enables the diversity function for reducing multipath effect.	Auto
MAIN	Diversity function is disabled. Only MAIN antenna is in use.	
AUX	Diversity function is disabled. Only AUX antenna is in use.	

#### **EAPOL Version**

Setting	Description	Factory Default
1	EAPOL version 1 was standardized in the 2001 version of 802.1X, which is much more commonly implemented.	1
2	EAPOL version 2 was specified in 802.1X-2004.	

#### **WMM**

Setting	Description	Factory Default
Enable/Disable	WMM is a QoS standard for WLAN traffic. Voice and video data will be given priority bandwidth when enabled with WMM supported wireless clients.	Disable

#### **Full 11a channel support**

Setting	Description	Factory Default
Enable/Disable	"Full 11a channel support" allows users to select one channel from 802.11a, including channels in licensed and unlicensed bands.	Disable



#### **READ THIS BEFORE CHANGING THE DFS SETTING**

DFS (Dynamic Frequency Selection) is a mechanism to allow unlicensed wireless devices to share spectrum with existing radar systems by detecting radar systems and avoid causing interference with them. The current versions of Moxa AWK series products do not support DFS, so only U-NII Low channels (36, 40, 44, and 48) are supported by default. If you want to enable the "Full 11a channel support" option, keep in mind that your wireless devices may interfere with radar systems, which may violate local laws. If you are not sure about this, we recommend that you keep this option disabled. Updated firmware that supports DFS will be available soon.

#### **Turbo Roaming (for Client mode only)**

Setting	Description	Factory Default
Enable/ Disable	Moxa's Turbo Roaming can enable rapid handover when the AWK-3121, as a client, roams among a group of APs.	Disable

When Turbo Roaming is enabled, the **RF type**, **AP alive check**, and **Scan channel** parameters are displayed. The **RF type** parameter indicates the current RF type that this client is using. The **AP alive check** function will check if the AP connection is still available. When this function is enabled, a check will be done every 10 ms. You can set up the channels to scan for this client for the APs among which it will roam using the **Scan channel** setting. There are three scan channels available. Note that the **Scan channels** may need to be modified when the **RF type** is changed. (For example, channel 36 is not available in **B**, **G**, or **B/G Mix** mode.)

<b>Turbo roaming</b>	<input checked="" type="checkbox"/> Enable
<b>RF type</b>	A
<b>Scan channel</b>	36 ▼
	Not scanning ▼
	Not scanning ▼
<b>Roaming threshold</b>	30 (10 ~ 70)
<b>Roaming difference</b>	7 (5 ~ 20)
<b>AP alive check</b>	Enable ▼
<b>AP candidate threshold</b>	28 (5 ~ 40)

## WLAN Certification Settings (for EAP-TLS in Client mode only)

When EAP-TLS is used, a WLAN Certificate will be required at the client end to support WPA/WPA2-Enterprise. The AWK-3121 can support the **PKCS #12**, also known as *Personal Information Exchange Syntax Standard*, certificate formats that define file formats commonly used to store private keys with accompanying public key certificates, protected with a password-based symmetric key.

**WLAN Certificate Settings Import (for EAP-TLS in Client mode only)**

**Current status**

Certificate issued to

Certificate issued by

Certificate expiration date

**Current Status** displays information for the current WLAN certificate, which has been imported into the AWK-3121. Nothing will be shown if a certificate is not available.

**Certificate issued to:** Shows the certificate user

**Certificate issued by:** Shows the certificate issuer

**Certificate expiration date:** Indicates when the certificate has expired

You can import a new WLAN certificate in the **Import WLAN Certificate** section by following these steps:

1. Input the corresponding password (or key) in the **Certificate private password** field and then click **Submit** to set the password.
2. The password will be displayed in the Certificate private password field. Click on the **Browse** button in **Select certificate/key file** and select the certificate file.

3. Click **Upload Certificate File** to import the certificate file. If the import succeeds, you can see the information uploaded in **Current Certificate**. If it fails, you may need to return to step 1 to set the password correctly and then import the certificate file again.

The screenshot shows a two-step process for uploading a certificate. Step 1 is titled 'Step 1:' and contains a label 'Certificate private password' followed by a text input field and a 'Submit' button. Step 2 is titled 'Step 2:' and contains a label 'Select certificate/key file' followed by a file selection input field with a 'Browse...' button, and an 'Upload Certificate File' button at the bottom.

**NOTE** The WLAN certificate will remain after the AWK-3121 reboots. Even though it is expired, it can still be seen on the **Current Certificate**.

## Advanced Settings

Several advanced functions are available to increase the functionality of your AWK-3121 and wireless network system. A VLAN is a collection of clients and hosts grouped together as if they were connected to the broadcast domains in a layer-2 network. The DHCP server helps you deploy wireless clients efficiently. Packet filters provide security mechanisms, such as firewalls, in different network layers. Moreover, the AWK-3121 can support STP/RSTP protocol to increase reliability across the entire network, and SNMP support can make network management easier.

## Using Virtual LAN

Setting up Virtual LANs (VLANs) on your AWK series increases the efficiency of your network by dividing the LAN into logical segments, as opposed to physical segments. In general, VLANs are easier to manage.

### The Virtual LAN (VLAN) Concept

#### What is a VLAN?

A virtual LAN, commonly known as a VLAN, is a group of hosts with a common set of requirements that communicate as if they were attached to the same broadcast domain, regardless of their physical location. A VLAN has the same attributes as a physical LAN, but it allows for end stations to be grouped together even if they are not located on the same network switch. Network reconfiguration can be done through software instead of physically relocating devices.

VLANs now extend as far as the reach of the access point signal. Clients can be segmented into wireless sub-networks via SSID and VLAN assignment. A Client can access the network by connecting to an AP configured to support its assigned SSID/VLAN.

### Benefits of VLANs

VLANs are used to conveniently, efficiently, and easily manage your network in the following ways:

- Manage adds, moves, and changes from a single point of contact
- Define and monitor groups
- Reduce broadcast and multicast traffic to unnecessary destinations
- Improve network performance and reduce latency
- Increase security
- Secure network restricts members to resources on their own VLAN
- Clients roam without compromising security

### VLAN Workgroups and Traffic Management

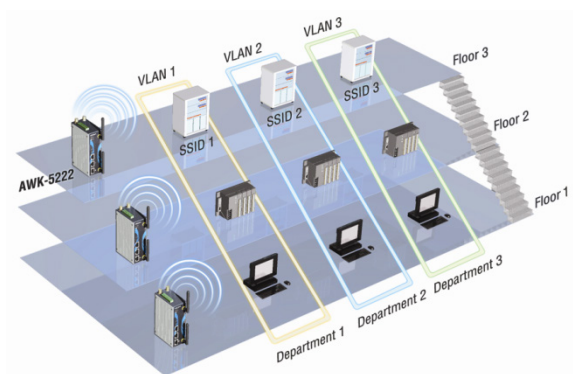
The AP assigns clients to a VLAN based on a Network Name (SSID). The AP can support up to 9 SSIDs per radio interface, with a unique VLAN configurable per SSID.

The AP matches packets transmitted or received to a network name with the associated VLAN. Traffic received by a VLAN is only sent on the wireless interface associated with that same VLAN. This eliminates unnecessary traffic on the wireless LAN, conserving bandwidth and maximizing throughput.

In addition to enhancing wireless traffic management, the VLAN-capable AP supports easy assignment of wireless users to workgroups. In a typical scenario, each user VLAN represents a department workgroup; for example, one VLAN could be used for a marketing department and the other for a human resource department.

In this scenario, the AP would assign every packet it accepted to a VLAN. Each packet would then be identified as marketing or human resource, depending on which wireless client received it. The AP would insert VLAN headers or "tags" with identifiers into the packets transmitted on the wired backbone to a network switch.

Finally, the switch would be configured to route packets from the marketing department to the appropriate corporate resources such as printers and servers. Packets from the human resource department could be restricted to a gateway that allowed access to only the Internet. A member of the human resource department could send and receive e-mail and access the Internet, but would be prevented from accessing servers or hosts on the local corporate network.



## Configuring Virtual LAN

### VLAN Settings

To configure the AWK's VLAN, use the VLAN Setting page to configure the ports.

**VLAN Settings (AP only)**

Management VLAN ID:

Port	PVID	VLAN Tagged (Please use comma to separate multiple VLAN tags.)
LAN	<input type="text" value="1"/>	<input type="text"/>
MOXA	<input type="text" value="1"/>	<input type="text"/>
SSID2	<input type="text" value="1"/>	<input type="text"/>
SSID3	<input type="text" value="1"/>	<input type="text"/>
SSID4	<input type="text" value="1"/>	<input type="text"/>
SSID5	<input type="text" value="1"/>	<input type="text"/>
SSID6	<input type="text" value="1"/>	<input type="text"/>
SSID7	<input type="text" value="1"/>	<input type="text"/>
SSID8	<input type="text" value="1"/>	<input type="text"/>
SSID9	<input type="text" value="1"/>	<input type="text"/>



**Management VLAN ID**

Setting	Description	Factory Default
VLAN ID ranges from 1 to 4094	Set the management VLAN of this AWK.	1

**Port**

Type	Description	Trunk Port
LAN	This port is the LAN port on the AWK.	Yes
WLAN	This is a wireless port for the specific SSID. This field will refer to the SSID that you have created. If more SSIDs have been created, new rows will be added.	
WDS	This is the WDS port on the AWK	Yes

**Port PVID**

Setting	Description	Factory Default
VLAN ID ranging from 1 to 4094	Set the port's VLAN ID for devices that connect to the port. The port can be a LAN port or WLAN ports.	1

**VLAN Tagged**

Setting	Description	Factory Default
A comma-separated list of VLAN IDs. Each of the VLAN IDs range from 1 to 4094.	Specify which VLANs can communicate with this specific VLAN.	(Empty)

**NOTE** The VLAN feature can allow wireless clients to manage the AP. If the VLAN Management ID matches a VLAN ID, then those wireless clients who are members of that VLAN will have AP management access.

CAUTION: Once a VLAN Management ID is configured and is equivalent to one of the VLAN IDs on the AP, all members of that User VLAN will have management access to the AP. Be careful to restrict VLAN membership to those with legitimate access to the AP.

## DHCP Server (for AP mode only)

DHCP (Dynamic Host Configuration Protocol) is a networking protocol that allows administrators to assign temporary IP addresses to network computers by "leasing" an IP address to a user for a limited amount of time, instead of assigning permanent IP addresses.

The AWK-3121 can act as a simplified DHCP server and easily assign IP addresses to your DHCP clients by responding to the DHCP requests from the client ends. The IP-related parameters you set on this page will also be sent to the client.

You can also assign a static IP address to a specific client by entering its MAC address. The AWK-3121 provides a **Static DHCP mapping** list with up to 16 entities. Be reminded to check the **Active** check box for each entity to activate the setting.

You can check the IP assignment status under **Status → DHCP Client List**.

**DHCP Server (AP only)**

**DHCP server**

**Default gateway**

**Subnet mask**

**Primary DNS server**

**Secondary DNS server**

**Start IP address**

**Maximum number of users**

**Client lease time**  (1~10 days)

**Static DHCP mapping**

No	<input type="checkbox"/> Active	IP Address	MAC Address
1	<input type="checkbox"/>	<input type="text"/>	<input type="text"/>
2	<input type="checkbox"/>	<input type="text"/>	<input type="text"/>
3	<input type="checkbox"/>	<input type="text"/>	<input type="text"/>

#### **DHCP server**

Setting	Description	Factory Default
Enable	Enables AWK-3121 as a DHCP server	Disable
Disable	Disable DHCP server function	

#### **Default gateway**

Setting	Description	Factory Default
IP address of a default gateway	The IP address of the router that connects to an outside network	None

#### **Subnet mask**

Setting	Description	Factory Default
subnet mask	Identifies the type of sub-network (e.g., 255.255.0.0 for a Class B network, or 255.255.255.0 for a Class C network)	None

#### **Primary/ Secondary DNS server**

Setting	Description	Factory Default
IP address of Primary/ Secondary DNS server	The IP address of the DNS Server used by your network. After entering the DNS Server's IP address, you can use URL as well. The Secondary DNS server will be used if the Primary DNS server fails to connect.	None

#### **Start IP address**

Setting	Description	Factory Default
IP address	Indicates the IP address which AWK-3121 can start assigning	None

#### **Maximum number of users**

Setting	Description	Factory Default
1 - 999	Specifies how many IP address can be assigned continuously	None

**Client lease time**

Setting	Description	Factory Default
1 – 10 days	The lease time for which an IP address is assigned. The IP address may go expired after the lease time is reached.	10 (days)

## Packet Filters

The AWK-3121 includes various filters for **IP-based** packets going through LAN and WLAN interfaces. You can set these filters as a firewall to help enhance network security.

### MAC Filter

The AWK-3121's MAC filter is a policy-based filter that can allow or filter out IP-based packets with specified MAC addresses. The AWK-3121 provides 8 entities for setting MAC addresses in your filtering policy.

Remember to check the **Active** check box for each entity to activate the setting.

**MAC Filters**

Enable

Policy

No	<input type="checkbox"/> Active	Name	MAC address
1	<input type="checkbox"/>	<input type="text"/>	<input type="text"/>
2	<input type="checkbox"/>	<input type="text"/>	<input type="text"/>
3	<input type="checkbox"/>	<input type="text"/>	<input type="text"/>

**Enable**

Setting	Description	Factory Default
Enable	Enables MAC filter	Disable
Disable	Disables MAC filter	

**Policy**

Setting	Description	Factory Default
Accept	Only the packets fitting the entities on list can be allowed.	Drop
Drop	Any packet fitting the entities on list will be denied.	

**ATTENTION**

Be careful when you enable the filter function:

**Drop** + "no entity on list is activated" = all packets are **allowed**

**Accept** + "no entity on list is activated" = all packets are **denied**

## IP Protocol Filter

The AWK-3121's IP protocol filter is a policy-based filter that can allow or filter out IP-based packets with specified IP protocol and source/destination IP addresses.

The AWK-3121 provides 8 entities for setting IP protocol and source/destination IP addresses in your filtering policy. Four IP protocols are available: **All**, **ICMP**, **TCP**, and **UDP**. You must specify either the Source IP or the Destination IP. By combining IP addresses and netmasks, you can specify a single IP address or a range of IP addresses to accept or drop. For example, "IP address 192.168.1.1 and netmask 255.255.255.255" refers to the sole IP address 192.168.1.1. "IP address 192.168.1.1 and netmask 255.255.255.0" refers to the range of IP addresses from 192.168.1.1 to 192.168.255. Remember to check the **Active** check box for each entity to activate the setting.

**IP Protocol Filters**

Enable

Policy

No	<input type="checkbox"/> Active	Protocol	Source IP	Source netmask	Destination IP	Destination netmask
1	<input type="checkbox"/>	All				
2	<input type="checkbox"/>	All				
3	<input type="checkbox"/>	All				

### Enable

Setting	Description	Factory Default
Enable	Enables IP protocol filter	Disable
Disable	Disables IP protocol filter	

### Policy

Setting	Description	Factory Default
Accept	Only the packets fitting the entities on the list can be allowed	Drop
Drop	Any packet fitting the entities on the list will be denied	



### ATTENTION

Be careful when you enable the filter function:

**Drop** + "no entity on list is activated" = all packets are **allowed**.

**Accept** + "no entity on list is activated" = all packets are **denied**.

## TCP/UDP Port Filter

The AWK-3121's TCP/UDP port filter is a policy-based filter that can allow or filter out TCP/UDP-based packets with a specified source or destination port.

The AWK-3121 provides 8 entities for setting the range of source/destination ports of a specific protocol. In addition to selecting TCP or UDP protocol, you can set either the source port, destination port, or both. The end port can be left empty if only a single port is specified. Of course, the end port cannot be larger than the start port.

The **Application name** is a text string that describes the corresponding entity with up to 31 characters. Remember to check the **Active** check box for each entity to activate the setting.

**TCP/UDP Port Filters**

Enable

Policy

No	<input type="checkbox"/> Active	Source port	Destination port	Protocol	Application name
1	<input type="checkbox"/>	<input type="text"/> ~ <input type="text"/>	<input type="text"/> ~ <input type="text"/>	TCP	<input type="text"/>
2	<input type="checkbox"/>	<input type="text"/> ~ <input type="text"/>	<input type="text"/> ~ <input type="text"/>	TCP	<input type="text"/>
3	<input type="checkbox"/>	<input type="text"/> ~ <input type="text"/>	<input type="text"/> ~ <input type="text"/>	TCP	<input type="text"/>

### Enable

Setting	Description	Factory Default
Enable	Enables TCP/UDP port filter	Disable
Disable	Disables TCP/UDP port filter	

### Policy

Setting	Description	Factory Default
Accept	Only the packets fitting the entities on list can be allowed.	Drop
Drop	Any packet fitting the entities on list will be denied.	



## ATTENTION

Be careful when you enable the filter function:

**Drop** + "no entity on list is activated" = all packets are **allowed**

**Accept** + "no entity on list is activated" = all packets are **denied**

## RSTP Settings (for WDS, Master, or Slave only)

AWK-3121 supports IEEE802.1D Spanning Tree Protocol and IEEE802.1w Rapid STP standards. In addition to eliminating unexpected path looping, STP/RSTP can provide a backup path recovery if a wired/ wireless path fails accidentally. The reliability and availability can increase because this fail-over function.

AWK-3121's STP/RSTP feature is disabled by default. To be completely effective, you must enable RSTP/STP on every AWK-3121 connected to your network. If AWK-3121 plays a **Client** role, which is connected to a device (PLC, RTU, etc.) as opposed to network switch equipment, it is not necessary to enable STP/RSTP. The reason is that it will cause unnecessary negotiation. AWK-3121s support STP/RSTP in **AP** mode (including WDS) only.

The following figures indicate which Spanning Tree Protocol parameters can be configured. A more detailed explanation of each parameter is given below the figure.

### RSTP Settings (WDS, Master, or Slave only)

Bridge priority	<input type="text" value="32768"/>	
Hello time	<input type="text" value="2"/> (1~10 seconds)	
Forwarding delay	<input type="text" value="15"/> (4~30 seconds)	
Max age	<input type="text" value="20"/> (6~40 seconds)	

No.	<input type="checkbox"/> Enable RSTP	Port Priority	Port Cost	<input type="checkbox"/> Edge Port
1 LAN	<input type="checkbox"/>	<input type="text" value="128"/>	<input type="text" value="200000"/>	<input type="checkbox"/>
2 WDS1	<input type="checkbox"/>	<input type="text" value="128"/>	<input type="text" value="2000000"/>	<input checked="" type="checkbox"/>

### RSTP status

This field will appear only when selected to operate STP/RSTP. It indicates whether this AWK-3121 is the Root of the Spanning Tree (the root is determined automatically) or not.

### Bridge priority

Setting	Description	Factory Default
Numerical value selected by user	You can increase the bridge priority by selecting a lower number. A higher bridge priority brings a greater chance of being established as the root of the Spanning Tree topology.	32768

### Hello time

Setting	Description	Factory Default
Numerical value input by user (1 – 10 seconds)	The root of the Spanning Tree topology periodically sends out a "hello" message to other devices on the network to check if the topology is healthy. Hello time indicates how often the root sends hello messages.	2 (seconds)

### Forwarding delay

Setting	Description	Factory Default
Numerical value input by user (4 – 30 seconds)	The amount of time this device waits before checking to see if it should change to a different topology.	15 (seconds)

### Max. age

Setting	Description	Factory Default
Numerical value input by user (6 – 40 seconds)	As a non-root role, if the device has not received a hello message from the root longer than Max. age, it will reconfigure itself as a root. Once two or more devices on the network are recognized as a root, the devices will renegotiate to set up a new Spanning Tree topology.	20 (seconds)

The AWK-3121 comes with 10 "ports" for RSTP settings. Numbers 3-10 (WDS1-WDS8) are available only when WDS is enabled in AP mode.

**Enable RSTP**

Setting	Description	Factory Default
Enable/ disable	Enables or disables the port as a node on the Spanning Tree topology.	Disable (unchecked)

**Port priority**

Setting	Description	Factory Default
Numerical value selected by user	Increase this port's priority as a node on the Spanning Tree topology by inputting a lower number.	128

**Port cost**

Setting	Description	Factory Default
Enable/ Disable	Input a higher cost to indicate that this port is less suitable as a node for the Spanning Tree topology	2000000

**Edge port**

Setting	Description	Factory Default
Checked/ unchecked	Sets a port, which no BPDU expectedly goes through, as an edge port	unchecked, except AP port

**NOTE** We recommend you set an edge port for the port, which is connected to a non-STP/RSTP sub-network or an end device (PLC, RTU, etc.) as opposed to network equipment. This can prevent unnecessary waiting and negotiation of STP/RSTP protocol, and accelerate system initialization. When an edge port receives BPDUs, it can still function as an STP/RSTP port and start negotiation.

Setting an edge port is different from disabling STP/RSTP on a port. If you disable STP/RSTP, a port will not deal with STP/RSTP BPDUs at all.

**Port Status**

**Port Status** indicates the current Spanning Tree status of this port. Use **Forwarding** for normal transmission, or **Blocking** to block transmission.

**SNMP Agent**

The AWK-3121 supports SNMP V1/V2c/V3. SNMP V1 and SNMP V2c use a community string match for authentication, which means that SNMP servers access all objects with read-only or read/write permissions using the community string *public/private* (default value). SNMP V3, which requires you to select an authentication level of MD5 or SHA, is the most secure protocol. You can also enable data encryption to enhance data security.

The AWK-3121's MIB, which can be downloaded from the Moxa website, supports reading the attributes via SNMP. Currently only the HTTP `get` method is supported.

SNMP security modes and security levels supported by the AWK-3121 are shown in the following table. Select the security mode and level that will be used to communicate between the SNMP agent and manager.

Protocol Version	Setting on UI web page	Authentication Type	Data Encryption	Method
SNMP V1, V2c	V1, V2c Read Community	Community string	No	Use a community string match for authentication
	V1, V2c Write/Read Community	Community string	No	Use a community string match for authentication
SNMP V3	No-Auth	No	No	Use account with admin or user to access objects
	MD5 or SHA	Authentication based on MD5 or SHA	No	Provides authentication based on HMAC-MD5, or HMAC-SHA algorithms. 8-character passwords are the minimum requirement for authentication.
	MD5 or SHA	Authentication based on MD5 or SHA	Data encryption key	Provides authentication based on HMAC-MD5 or HMAC-SHA algorithms, and data encryption key. 8-character passwords and a data encryption key are the minimum requirements for authentication and encryption.

The following parameters can be configured on the **SNMP Agent** page. A more detailed explanation of each parameter is given below the following figure.

**SNMP Agent**

**Enable** Disable ▾  
**Remote management** Disable ▾  
**Read community** public  
**Write community** private  
**SNMP agent version** V1, V2c ▾  
**Admin authentication type** No Auth ▾  
**Admin privacy type** Disable ▾  
**Privacy key** [Empty text field]  
**Private MIB information**  
**Device object ID** enterprise.8691.15.1

**Enable**

Setting	Description	Factory Default
Enable	Enables SNMP Agent	Disable
Disable	Disables SNMP Agent	

**Remote Management**

Setting	Description	Factory Default
Enable	Allow remote management via SNMP agent	Disable
Disable	Disallow remote management via SNMP agent	



**Read community (for V1, V2c)**

Setting	Description	Factory Default
V1, V2c Read Community	Use a community string match with a maximum of 31 characters for authentication. This means that the SNMP agent can access all objects with read-only permissions using this community string.	public

**Write community (for V1, V2c)**

Setting	Description	Factory Default
V1, V2c Read /Write Community	Use a community string match with a maximum of 31 characters for authentication. This means that the SNMP agent can accesses all objects with read/write permissions using this community string.	private

**SNMP agent version**

Setting	Description	Factory Default
V1, V2c, V3, or V1, V2c, or V3 only	Select the SNMP protocol version used to manage the switch.	V1, V2c

**Admin auth type (for V1, V2c, V3, and V3 only)**

Setting	Description	Factory Default
No Auth	Use admin account to access objects. No authentication	No Auth
MD5	Provide authentication based on the HMAC-MD5 algorithms. 8-character passwords are the minimum requirement for authentication.	
SHA	Provides authentication based on HMAC-SHA algorithms. 8-character passwords are the minimum requirement for authentication.	

**Admin private key (for V1, V2c, V3, and V3 only)**

Setting	Description	Factory Default
Disable	No data encryption	Disable
DES	DES-based data encryption	
AES	AES-based data encryption	

**Private key**

A data encryption key is the minimum requirement for data encryption (maximum of 63 characters)

**Private MIB Information Device Object ID**

Also known as the *OID*, this is AWK-3121's enterprise value and is a fixed value.

## Link Fault Pass-Through (for Client/Slave mode only)

This function means if Ethernet port is link down, wireless connection will be forced to disconnect. Once Ethernet link is recovered, AWK will try to connect to AP.

If wireless is disconnected, AWK restarts auto-negotiation on Ethernet port but always stays in the link failure state. Once the wireless connection is recovered, AWK will try to recover the Ethernet link.

System log will indicate the link fault pass through events in addition to the original link up/down events.

**Link Fault Pass-Through (for Client/Slave mode only)**

Link Fault Pass-Through  Enable  Disable

### Link Fault Pass-Through

Setting	Description	Factory Default
Enable	Enables Link Fault Pass-Through	Disable
Disable	Disable Link Fault Pass-Through	

## Auto Warning Settings

Since industrial-grade devices are often located at the endpoints of a system, these devices will not always know what is happening elsewhere on the network. This means that these devices, including wireless APs or clients, must provide system maintainers with real-time alarm messages. Even when system administrators are out of the control room for an extended period, they can still be informed of the status of devices almost instantaneously when exceptions occur.

In addition to logging these events, the AWK-3121 supports different approaches to warn engineers automatically, such as SNMP trap, e-mail, and relay output. It also supports two digital inputs to integrate sensors into your system to automate alarms by email and relay output.

## System Log

### System Log Event Types

Detail information for grouped events is shown in the following table. You can check the box for Enable log to enable the grouped events. All default values are enabled (checked). The log for system events can be seen in **Status** → **System Log**.

System log Event Types	
Event group	Enable log
System-related events	<input checked="" type="checkbox"/>
Network-related events	<input checked="" type="checkbox"/>
Config-related events	<input checked="" type="checkbox"/>
Power events	<input checked="" type="checkbox"/>
DI events	<input checked="" type="checkbox"/>

System-related events	Event is triggered when...
System restart (warm start)	The AWK-3121 is rebooted, such as when its settings are changed (IP address, subnet mask, etc.).
Network-related events	Event is triggered when...
LAN link on	The LAN port is connected to a device or network.
LAN link off	The port is disconnected (e.g., the cable is pulled out, or the opposing device shuts down).
Client joined/ left (for AP/Master mode)	A wireless client is associated or disassociated.
WLAN connected to AP (for Client/Slave mode)	The AWK-3121 is associated with an AP.
WLAN disconnected (for Client/Slave mode)	The AWK-3121 is disassociated from an AP.
Config-related events	Event is triggered when...
Configuration Changed	A configuration item has been changed.
Configuration file import via Web Console	The configuration file is imported to the AWK-3121.
Console authentication failure	An incorrect password is entered.
Firmware upgraded	The AWK-3121's firmware is updated.
Power events	Event is triggered when...
Power 1/2 transition (On -> Off)	The AWK-3121 is powered down in PWR1/2.
PoE transition (On -> Off)	The AWK-3121 is powered down in PoE (discontinued starting with HW Rev 2.0.0).
Power 1/2 transition (Off -> On)	The AWK-3121 is powered via PWR1/2.
PoE transition (Off -> On)	The AWK-3121 is powered via PoE (discontinued starting with HW Rev 2.0.0).
DI events	Event is triggered when...
DI1/2 transition (On -> Off)	Digital Input 1/2 is triggered by on to off transition
DI1/2 transition (Off -> On)	Digital Input 1/2 is triggered by off to on transition

## Syslog

This function provides the event logs for the Syslog server. The function supports up to three configurable Syslog servers and Syslog server UDP port numbers. When an event occurs, the event will be sent as a Syslog UDP packet to the specified Syslog servers.

### Syslog Event Types

Detail information for the grouped events is shown in the following table. You can check the box for **Enable log** to enable the grouped events. All default values are enabled (checked). Details for each event group can be found on the "System log Event Types" table on page 3-31.

Syslog Event Types	
Event group	Enable log
System-related events	<input checked="" type="checkbox"/>
Network-related events	<input checked="" type="checkbox"/>
Config-related events	<input checked="" type="checkbox"/>
Power events	<input checked="" type="checkbox"/>
DI events	<input checked="" type="checkbox"/>

## Syslog Server Settings

You can configure the parameters for your Syslog servers in this page.

Syslog Server Settings	
Syslog server 1	<input type="text"/>
Syslog port	<input type="text" value="514"/>
Syslog server 2	<input type="text"/>
Syslog port	<input type="text" value="514"/>
Syslog server 3	<input type="text"/>
Syslog port	<input type="text" value="514"/>

### Syslog server 1/ 2/ 3

Setting	Description	Factory Default
IP address	Enter the IP address of the 1st/ 2nd/ 3rd Syslog Server	None

### Syslog port

Setting	Description	Factory Default
Port destination (1 to 65535)	Enter the UDP port of the corresponding Syslog server	514

## E-mail

### E-mail Event Types

Check the box for **Active** to enable the event items. All default values are deactivated (unchecked). Details for each event item can be found in the **System log Event Types** section.

E-mail Event Types	
Event	<input type="checkbox"/> Active
Cold start	<input type="checkbox"/>
Warm start	<input type="checkbox"/>
Power 1 transition (On-->Off)	<input type="checkbox"/>
Power 1 transition (Off-->On)	<input type="checkbox"/>
Power 2 transition (On-->Off)	<input type="checkbox"/>
Power 2 transition (Off-->On)	<input type="checkbox"/>
PoE transition (On-->Off)	<input type="checkbox"/>
PoE transition (Off-->On)	<input type="checkbox"/>
Configuration changed	<input type="checkbox"/>
Console authentication failure	<input type="checkbox"/>
DI 1 transition (On-->Off)	<input type="checkbox"/>
DI 1 transition (Off-->On)	<input type="checkbox"/>
DI 2 transition (On-->Off)	<input type="checkbox"/>
DI 2 transition (Off-->On)	<input type="checkbox"/>
LAN link on	<input type="checkbox"/>
LAN link off	<input type="checkbox"/>

## E-mail Server Settings

You can set up to 4 e-mail addresses to receive alarm emails from the AWK-3121. The following parameters can be configured on the **E-mail Server Settings** page. In addition, a **Send Test Mail** button can be used to test whether the Mail server and e-mail addresses work well. More detailed explanations about these parameters are given after the following figure.

**E-mail Server Settings**

Mail server (SMTP)

User name

Password

From e-mail address

To e-mail address 1

To e-mail address 2

To e-mail address 3

To e-mail address 4

### Mail server (SMTP)

Setting	Description	Factory Default
IP address	The IP Address of your email server.	None

### User name & Password

Setting	Description	Factory Default
	User name and password used in the SMTP server	None

### From e-mail address

Setting	Description	Factory Default
Max. 63 characters	Enter the administrator's e-mail address which will be shown in the "From" field of a warning e-mail.	None

### To E-mail address 1/ 2/ 3/ 4

Setting	Description	Factory Default
Max. 63 characters	Enter the receivers' e-mail addresses.	None

## Relay

The AWK-3121 has one relay output, which consists of 2 terminal block contacts on the AWK-3121's top panel. These relay contacts are used to indicate user-configured events and system failure.

The two wires attached to the relay contacts form an open circuit when a user-configured event is triggered. If a user-configured event does not occur, the relay circuit will remain closed. For safety reasons, the relay circuit is kept open when the AWK-3121 is not powered.

## Relay Event Types

You can check the box for **Active** to enable the event items. All default values are deactivated (unchecked). Details for each event item can be found in the **System log Event Types** section.

Relay Event Types	
Event	Active
Power 1 transition (On-->Off)	<input type="checkbox"/>
Power 2 transition (On-->Off)	<input type="checkbox"/>
PoE transition (On-->Off)	<input type="checkbox"/>
DI 1 transition (On-->Off)	<input type="checkbox"/>
DI 1 transition (Off-->On)	<input type="checkbox"/>
DI 2 transition (On-->Off)	<input type="checkbox"/>
DI 2 transition (Off-->On)	<input type="checkbox"/>
LAN link On	<input type="checkbox"/>
LAN link Off	<input type="checkbox"/>

## Trap

Traps can be used to signal abnormal conditions (notifications) to a management station. This trap-driven notification can make your network more efficient.

Because a management station usually takes care of a large number of devices that have a large number of objects, it will be overloading for the management station to poll or send requests to query every object on every device. It would be better if the managed device agent could notify the management station by sending a message known as a trap for the event.

## Trap Event Types

Trap Event Types	
Event	<input type="checkbox"/> Active
Cold start	<input type="checkbox"/>
Warm start	<input type="checkbox"/>
Power 1 transition (On-->Off)	<input type="checkbox"/>
Power 1 transition (Off-->On)	<input type="checkbox"/>
Power 2 transition (On-->Off)	<input type="checkbox"/>
Power 2 transition (Off-->On)	<input type="checkbox"/>
PoE transition (On-->Off)	<input type="checkbox"/>
PoE transition (Off-->On)	<input type="checkbox"/>
Configuration changed	<input type="checkbox"/>
Console authentication failure	<input type="checkbox"/>
DI 1 transition (On-->Off)	<input type="checkbox"/>
DI 1 transition (Off-->On)	<input type="checkbox"/>
DI 2 transition (On-->Off)	<input type="checkbox"/>
DI 2 transition (Off-->On)	<input type="checkbox"/>
LAN link on	<input type="checkbox"/>
LAN link off	<input type="checkbox"/>

### SNMP Trap Receiver Settings

SNMP traps are defined in SMIV1 MIBs (SNMPv1) and SMIV2 MIBs (SNMPv2c). The two styles are basically equivalent, and it is possible to convert between the two. You can set the parameters for SNMP trap receivers through the web page.

**SNMP Trap Receiver Settings**

1st Trap version

1st Trap server IP/name

1st Trap community

2nd Trap version

2nd Trap server IP/name

2nd Trap community

**1st / 2nd Trap version**

Setting	Description	Factory Default
V1	SNMP trap defined in SNMPv1	V1
V2	SNMP trap defined in SNMPv2	

**1st / 2nd Trap server IP/name**

Setting	Description	Factory Default
IP address or host name	Enter the IP address or name of the trap server used by your network.	None

**1st / 2nd Trap community**

Setting	Description	Factory Default
Max. of 31 characters	Use a community string match with a maximum of 31 characters for authentication.	alert

# Status

## Wireless Status

The status of the wireless connection that consists of the **802.11 Info** such as Operation mode and Channel, **Transmission Information**, and information on **Outgoing Packets** and **Incoming Packets** are shown on the **Wireless Status** page. The status will refresh every 5 seconds if the **Auto refresh** box is checked.

Depending on the operation mode you choose, certain values for **802.11 info** may not be displayed. For example, the **Current BSSID** and **Signal strength** are not available in the AP mode.

It is helpful to use the continuously updated information on this page, such as **Signal strength**, to monitor the signal strength of the AWK-3121 in Client mode.

### Wireless Status

Auto refresh

Show status of WLAN (SSID: MOXA) ▾

802.11 Info	
Operation mode	AP
Channel	6
RF type	B/G Mixed
SSID	MOXA
MAC	06:90:E8:4E:9A:70
Security mode	OPEN
Current BSSID	06:90:E8:4E:9A:70
Signal strength	N/A
Transmission Information	
Rate	Auto
Power	12 dBm
Outgoing Packets	
Total sent	0
Packets with error	0
Packets dropped	0
Incoming Packets	
Total received	0
Packets with error	0
Packets dropped	0



## Associated Client List (for AP/master mode only)

This page shows all the clients that are currently associated with a specific AWK-3121. The following information which is useful for easy network diagnosis is also available:

<b>MAC Address</b>	Displays the associated client MAC address. If DHCP server is enabled on this AP/Master, the IP address of the client will also be displayed.
<b>Connection Duration</b>	States how long the client has been connecting to this AP/Master.
<b>SNR</b>	States the Signal-Noise Ratio of the associated client. This is especially useful for identifying a weak signal client that is potentially reducing the overall wireless performance.
<b>Tx (Bytes/Pkts):</b>	Records the AP-to-client traffic after a client is associated with the AP.
<b>Rx (Bytes/Pkts):</b>	Records the client-to-AP traffic after a client is associated with the AP.

### Associated Client List

Show clients for WLAN (SSID: IW\_2.4GHz)

No	MAC Address	Connection Duration	SNR	Tx (Bytes)	Tx (pkts)	Rx (Bytes)	Rx (pkts)
1	ac:81:12:59:66:2f	0 days 04h:43m:49s	45	333651441	300506	106572118	235173
2	84:3a:4b:39:b7:5c	0 days 01h:16m:05s	50	1459894	3551	957998	3553
3	18:00:2d:44:bf:5d	0 days 00h:36m:33s	22	115818	502	223030	581
4	9c:4e:36:a6:98:08	0 days 00h:20m:05s	18	236663	820	192898	739

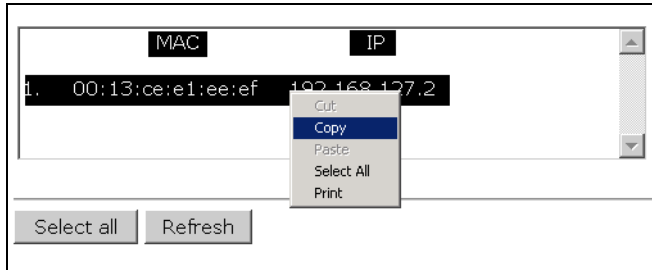
## DHCP Client List (for AP mode only)

The DHCP Client List shows all the clients that require and have successfully received IP assignments. You can click the **Refresh** button to refresh the list.

### DHCP Client List

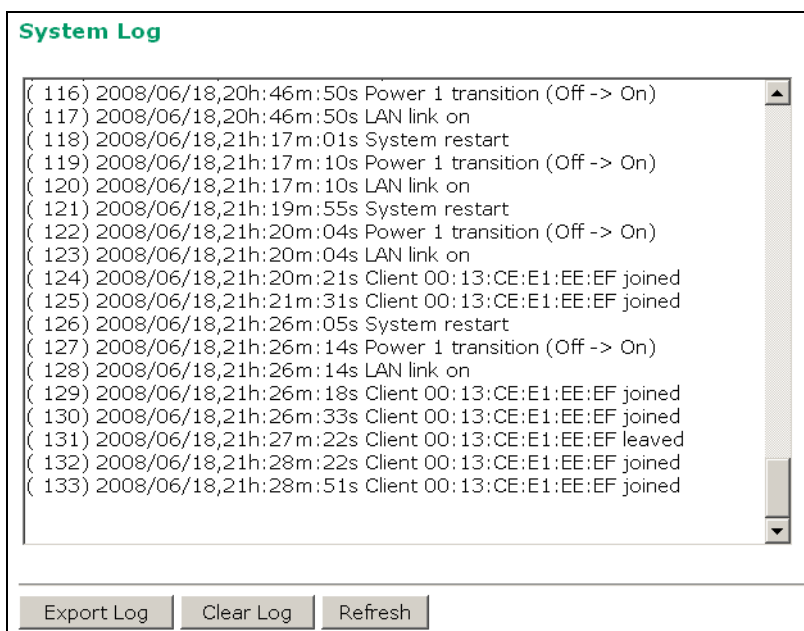
	MAC	IP
1.	01:5C:96:9D:29:77:71	192.168.41.229
2.	01:30:10:B3:72:72:7F	192.168.41.142
3.	01:9C:4E:36:A6:98:08	192.168.41.216
4.	01:B4:CE:F6:4E:CB:3C	192.168.41.146
5.	01:90:B6:86:75:A5:28	192.168.41.184
6.	01:8C:70:5A:49:FF:58	192.168.41.127
7.	01:68:09:27:CD:41:43	192.168.41.143
8.	01:5C:C5:D4:75:50:7B	192.168.41.140
9.	01:84:3A:4B:39:B7:5C	192.168.41.181
10.	01:A4:C3:61:03:F0:E2	192.168.41.137
11.	* 192.168.41.226	
12.	01:80:86:F2:B2:65:1F	192.168.41.222
13.	01:34:4D:F7:3A:23:FB	192.168.41.122
14.	01:30:75:12:A7:15:0E	192.168.41.139
15.	01:EC:85:2F:88:B3:6A	192.168.41.213
16.	01:30:75:12:F2:59:F9	192.168.41.125
17.	01:78:6C:1C:BF:51:0E	192.168.41.144
18.	01:AC:81:12:59:66:2F	192.168.41.156

You can press **Select all** button to select all content in the list for further editing.



## System Log

Triggered events are recorded in System Log. You can export the log contents to an available viewer by clicking **Export Log**. You can use the **Clear Log** button to clear the log contents and the **Refresh** button to refresh the log.



## Relay Status

The status of user-configurable events can be found under **Relay Status**. The status will refresh every 5 seconds if the **Auto refresh** box is checked.

If an event is triggered, it will be noted on this list. System administrators can click **Acknowledge Event** when he has acknowledged the event and addressed it.

**Relay Status**

Auto refresh

Relay Status		
Power1 transition (On-->Off)	---	Acknowledge Event
Power2 transition (On-->Off)	---	Acknowledge Event
PoE transition (On-->Off)	---	Acknowledge Event
DI1 transition (On-->Off)	---	Acknowledge Event
DI1 transition (Off-->On)	---	Acknowledge Event
DI2 transition (On-->Off)	---	Acknowledge Event
DI2 transition (Off-->On)	---	Acknowledge Event
LAN link On	---	Acknowledge Event
LAN link Off	---	Acknowledge Event

## DI and Power Status

The status of power inputs and digital inputs is shown on this web page. The status will refresh every 5 seconds if the **Auto refresh** box is checked.

### Din and Power status

Auto refresh

Input status	On / Off
Power 1 status	On
Power 2 status	Off
PoE status	Off
DI 1 status	Off
DI 2 status	Off

## System Status

The system status section indicates the status of the device memory and CPU usage in the current device.

**NOTE** A CPU overload can result in a watchdog-triggered reboot of the system. Factors such as a high number of firewall rules (IP/MAC/Protocol filters) and traffic PPS (packet per second) contribute to the rise in CPU usage.

**NOTE** The AWK-3121 supports up to 1080 packets per second.

### System Status

Memory Info	
Total (kB)	126724
Used (kB)	48604
Free (kB)	78120
CPU Info	
Usage (%)	4.33

Refresh

## Network Status

The network status section indicates the network status of the device with respect to ARP, bridge status, LLDP, RSTP, and the routing table.

### ARP Table

Address Resolution Protocol (ARP) Table indicates the current IP to MAC address mapping for the device.

#### ARP Table

IP Address	MAC Address
192.168.127.18	F0:DE:F1:DD:A1:ED

Refresh

### Bridge Status

Indicates the current status of the network bridge on the device. The interfaces and the corresponding MAC addresses in this section are the entry points for ingress traffic.

#### Bridge Status

Interface	MAC Address
LAN	00:90:E8:22:B1:D9
ath01	00:90:E8:4E:9A:79
LAN	F0:DE:F1:DD:A1:ED

Refresh

### LLDP Status

Displays information on neighboring devices collected via LLDP (Link Layer Discovery Protocol).

#### LLDP Status

Interface	Neighbor Information				
	System Name	ID	IP	Port	Port Description
LAN	AWK-3121_13496	00:90:E8:22:B1:D9 (MAC)	192.168.127.253	7 (LOCAL)	LAN
WLAN	AWK-3121_0777	00:90:E8:4E:9A:79 (MAC)	192.168.127.252	10 (LOCAL)	WLAN

Refresh

### Routing Table

Displays the routing information for the current device.

#### Routing Table

Destination	Gateway	Mask	Interface
192.168.127.0	*	255.255.255.0	*
default	192.168.127.251	0.0.0.0	*

Refresh

## RSTP Status

Displays the Spanning Tree Protocol parameters configured.

### RSTP Status

```
RSTP status          -----
Bridge priority      32768
Hello time           2 seconds
Forwarding delay     15 seconds
Max age              20 seconds
```

No	Enable RSTP	Port Priority	Port Cost	Edge Port	Status
----	-------------	---------------	-----------	-----------	--------

## Maintenance

Maintenance functions provide the administrator with tools to manage the AWK-3121 and wired/wireless networks.

## Console Settings

You can enable or disable access permission for the following consoles: HTTP, HTTPS, Telnet, and SSH. For higher security, we recommend you only allow access to the two secure consoles, HTTPS and SSH.

### Console Settings

HTTP console     Enable    Disable  
 HTTPS console    Enable    Disable  
 Telnet console    Enable    Disable  
 SSH console    Enable    Disable

## Ping

**Ping** helps to diagnose the integrity of wired or wireless networks. By inputting a node's IP address in the **Destination** field, you can use the **ping** command to make sure it exists and whether or not the access path is available.

### Ping

Destination

If the node and access path are available, you will see that all packets were successfully transmitted with no loss. Otherwise, some, or even all, packets may get lost, as shown in the following figure.

### Ping

Destination

---

PING 192.168.127.2 (192.168.127.2): 56 data bytes

--- 192.168.127.2 ping statistics ---

4 packets transmitted, 0 packets received, 100% packet loss

## Firmware Upgrade

The AWK-3121 can be enhanced with more value-added functions by installing firmware upgrades. The latest firmware is available at Moxa's download center.

Before running a firmware upgrade, make sure the AWK-3121 is off-line. Click the **Browse** button to specify the firmware image file and click **Firmware Upgrade and Restart** to start the firmware upgrade. After the progress bar reaches 100%, the AWK-3121 will reboot itself.

When upgrading your firmware, the AWK-3121's other functions are forbidden.

**Firmware Upgrade**

Select update image

---



### ATTENTION

Please make sure the power source is stable when you upgrade your firmware. An unexpected power breakup may damage your AWK-3121.

## Importing and Exporting Configuration Settings

You can back up or restore the AWK-3121's configuration with **Config Import Export**.

In the **Config Import** section, click **Browse** to specify the configuration file and click **Config Import** button to begin importing the configuration.

**Config Import**

Select configuration file

---

In the **Config Export** section, click the **Config Export** button and save the configuration file onto your local storage media. The configuration file is a text file and you can view and edit it with a general text-editing tool.

**Config Export**

---

You can also back up or restore the ABC-01 (HW Rev. 1.1 support only) configuration with **Config Import Export**.

**ABC-01 Import**

---

**ABC-01 Export**

---

To download the configuration to the AWK:

1. Turn off the AWK.
2. Plug in the ABC-01 to the AWK's RS-232 console.
3. Turn on AWK.
4. AWK will detect ABC-01 during boot up, and download the configuration from the ABC-01 to the AWK automatically. Once the configuration downloads and if configuration format is correct, the AWK will emit three short beeps, then continue the boot up.
5. Once the AWK has booted up successfully, it will emit the normal two beeps, and the ready LED will turn to solid green.

## Load Factory Default

Use this function to reset the AWK-3121 and roll all settings back to the factory default values. You can also reset the hardware by pressing the reset button on the top panel of the AWK-3121.

**Load Factory Default**

**Reset to Factory Default**

Click **Activate** to reset all settings, including the console password, to the factory default values. The system will be restarted immediately.

## Password

You can change the administration password for each of the AWK-3121's console managers by using the **Password** function. Before you set up a new password, you must input the current password and reenter the new password for confirmation. For your security, do not use the default password **root**, and remember to change the administration password regularly.

**Password**

Current password

New password

Confirm password

## Misc. Settings

Additional settings to help you manage your AWK-3121, are available on this page.

**Misc. Settings**

Reset button  Always enable  Disable after 60 sec

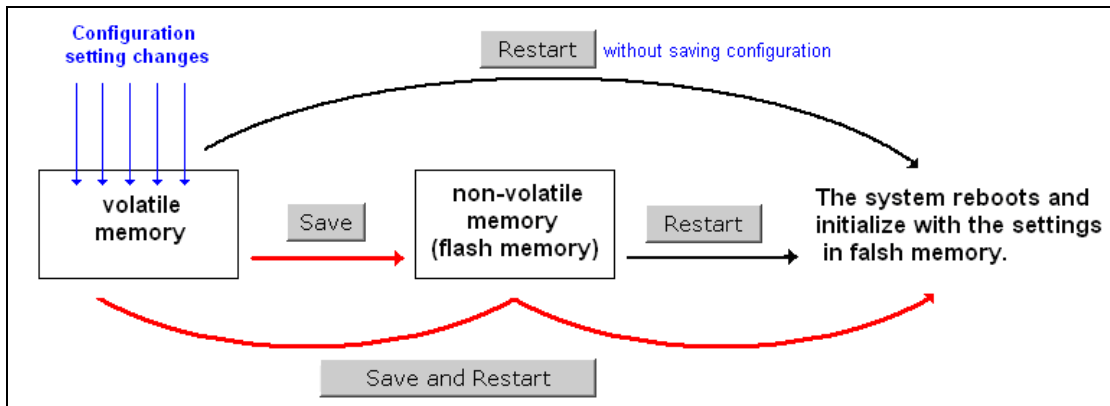
### Reset button

Setting	Description	Factory Default
Always enable	The AWK-3121's Reset button works normally.	Always enable
Disable after 60 sec	The AWK-3121's reset to default function will be inactive 60 seconds after the AWK-3121 finishes booting up.	

## Save Configuration

The following figure shows how the AWK-3121 stores the setting changes into volatile and non-volatile memory. All data stored in volatile memory will disappear when the AWK-3121 is shutdown or rebooted unless they are **y**. Because the AWK-3121 starts up and initializes with the settings stored in flash memory, all new changes must be saved to flash memory before restarting the AWK-3121.

This also means the new changes will not work unless you run either the **Save Configuration** function or the **Restart** function.



After you click on **Save Configuration** in the left menu box, the following screen will appear. Click **Save** if you wish to update the configuration settings in the flash memory at this time. Alternatively, you may choose to run other functions and put off saving the configuration until later. However, the new setting changes will remain in the non-volatile memory until you save the configurations.

**Save Configuration**

If you have submitted any configuration changes, you must save the changes and restart the server before they take effect. Click **Save** to save the changes in the AWK-3121-US's memory. Click **Restart** to activae new settings in the navigation panel.

---

## Restart

If you submitted configuration changes, you will find a blinking string in the upper right corner of the screen. After making all your changes, click the **Restart** function in the left menu box. One of two different screens will appear.

If you made changes recently but did not save, you will be given two options. Clicking the **Restart** button here will reboot the AWK-3121 directly, and all setting changes will be ignored. Clicking the **Save and Restart** button will apply all setting changes and then reboot the AWK-3121.



**Restart**

!!! Warning !!!

Click "Restart" to discard changes and reboot the AWK-3121-US directly.

Click "Save and Restart" to apply all setting changes and reboot the AWK-3121-US.

---

If you run the **Restart** function without changing any configurations or saving all your changes, you will see just one **Restart** button on your screen.

**Restart**

!!! Warning !!!

Clicking Restart will disconnect all Ethernet connections and reboot the AWK-3121-US.

---

You will not be able to run any of the AWK-3121's functions while the system is rebooting.

## Logout

**Logout** helps users disconnect the current HTTP or HTTPS session and go to the Login page. For security reasons, we recommend you logout before quitting the console manager.

**Logout**

Click **Logout** button to defalut Login page.

---

# Software Installation and Configuration

---

The following topics are covered in this chapter:

- **Overview**
- **Wireless Search Utility**
  - Installing Wireless Search Utility
  - Configuring the Wireless Search Utility

## Overview

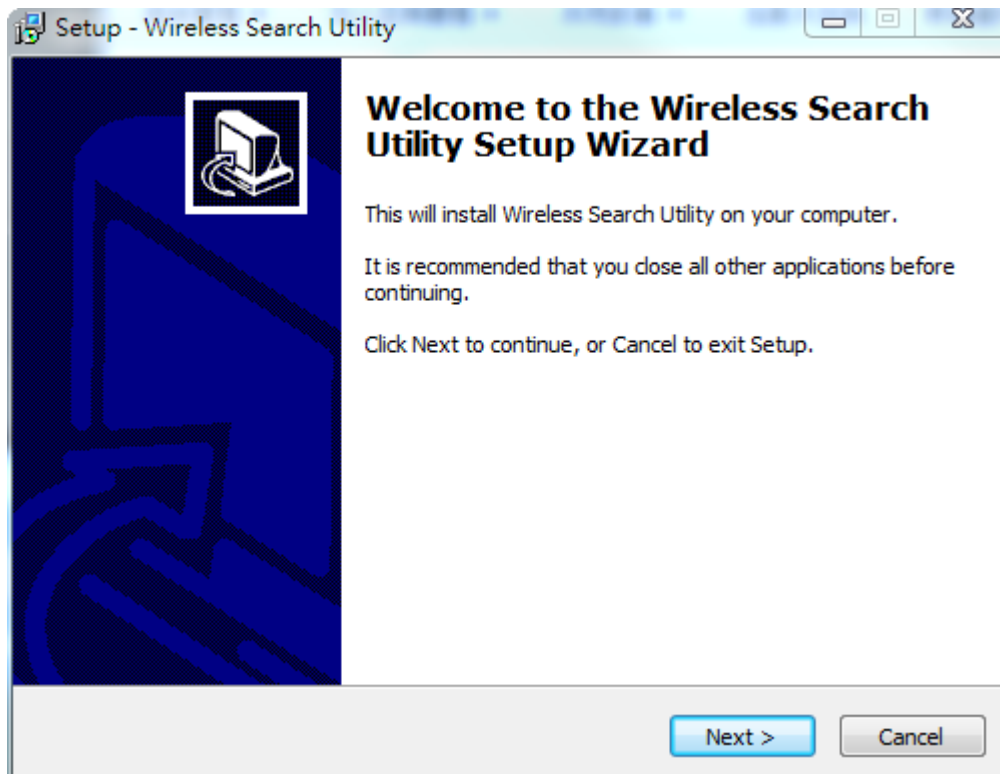
The Wireless Search Utility can be downloaded from the Moxa website at [www.moxa.com](http://www.moxa.com).

## Wireless Search Utility

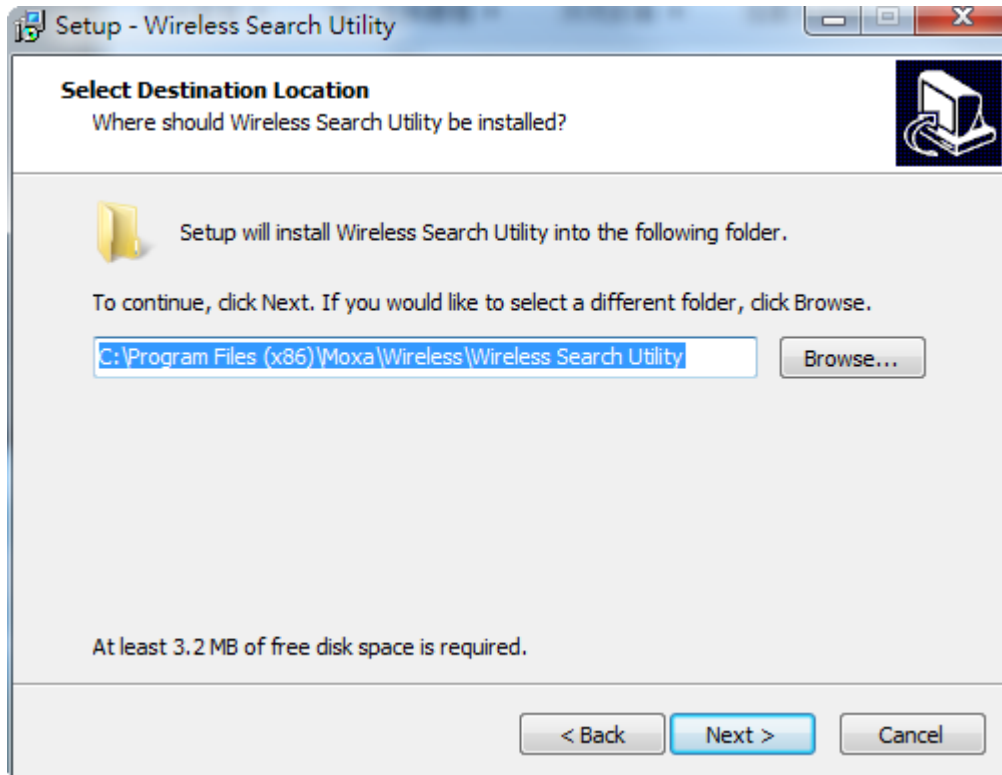
### Installing Wireless Search Utility

Once the Wireless Search Utility is downloaded, run the setup executable to start the installation.

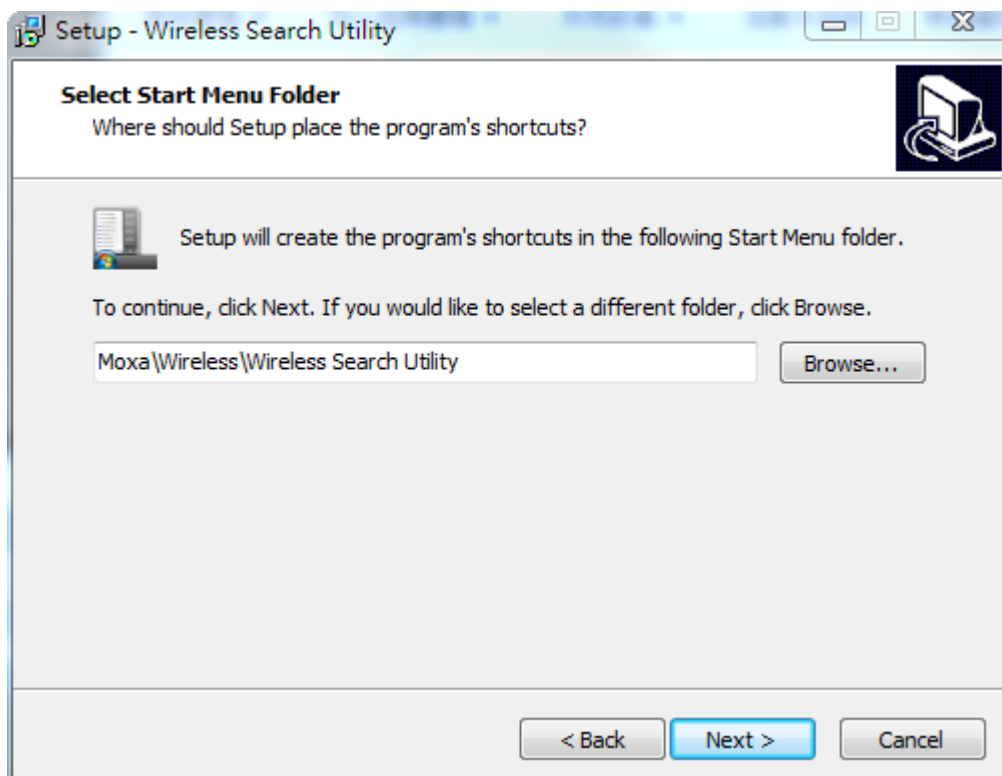
1. Click **Next** on the **Welcome** screen that opens to proceed with the installation.



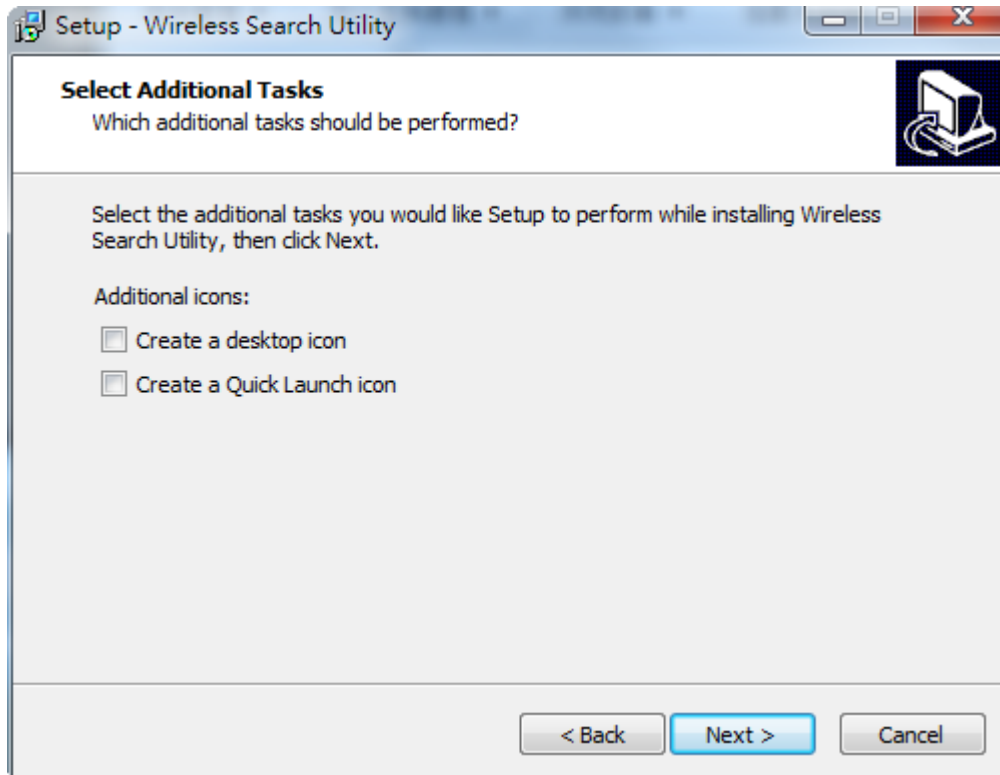
2. Click **Next** to install program files to the default directory, or click **Browse** to select an alternate location.



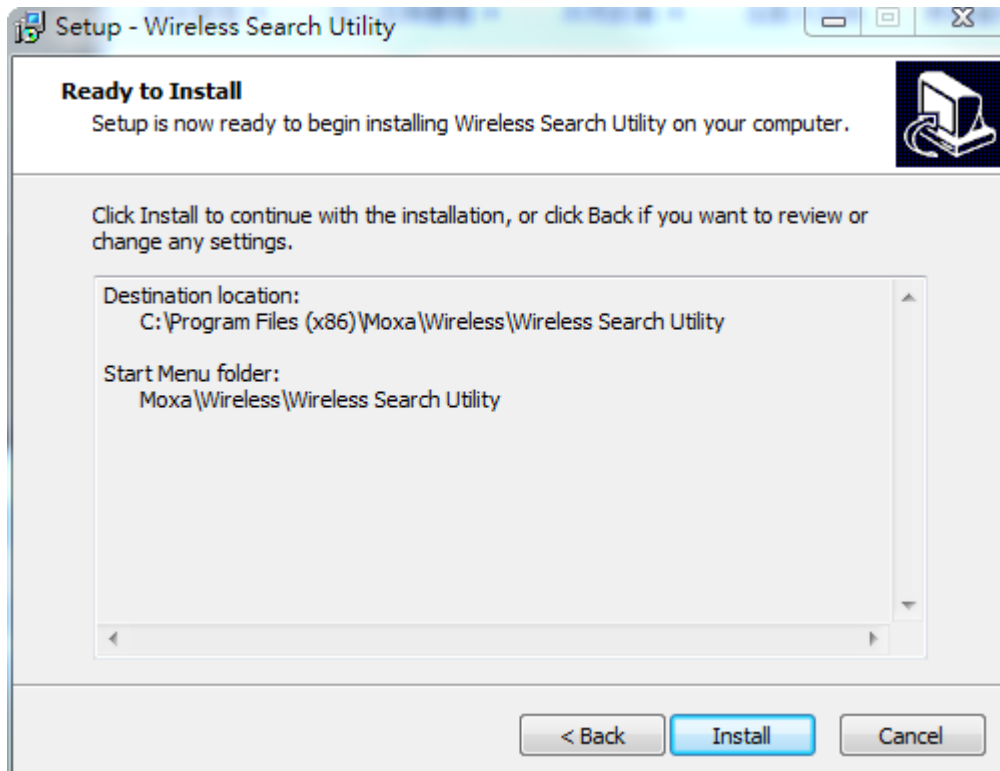
3. Click **Next** to create the program's shortcut files in the default directory, or click **Browse** to select an alternate location.



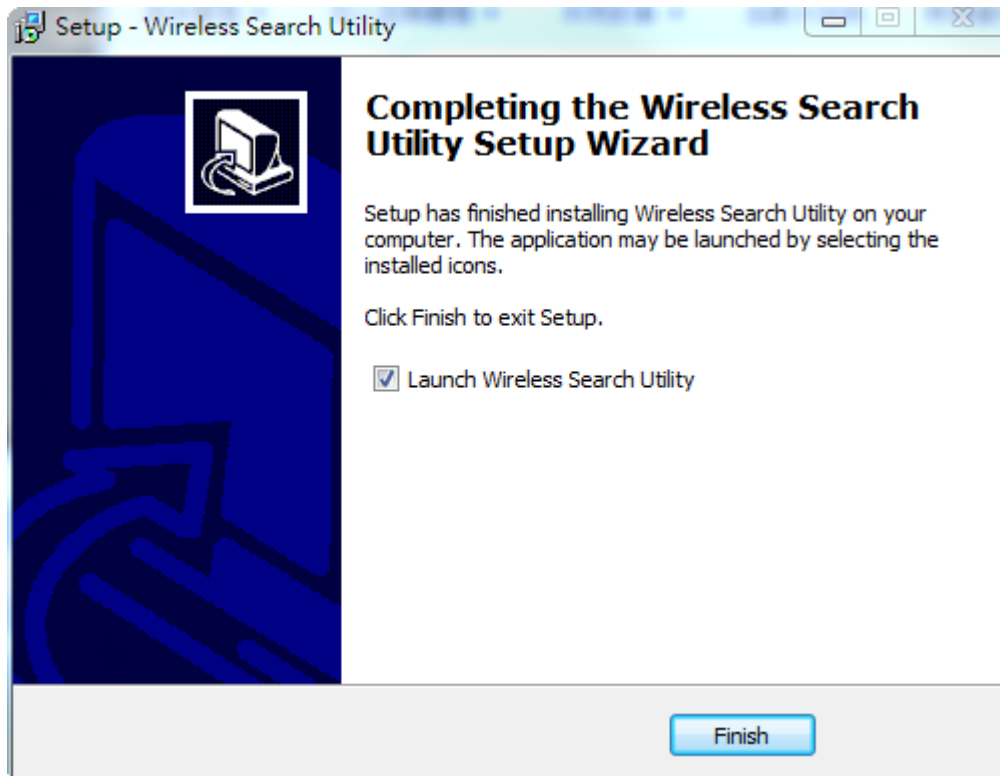
4. Click **Next** to select additional tasks.



5. Click **Next** to proceed with the installation. The installer then displays a summary of the installation options.



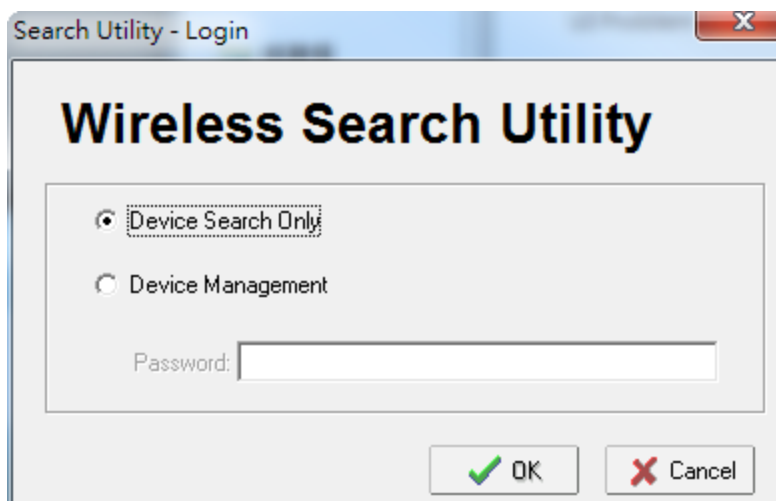
- Click **Install** to begin the installation. The setup window will report the progress of the installation. To change the installation settings, click **Back** and navigate to the previous screen.
- Click **Finish** to complete the installation of the Wireless Search Utility.



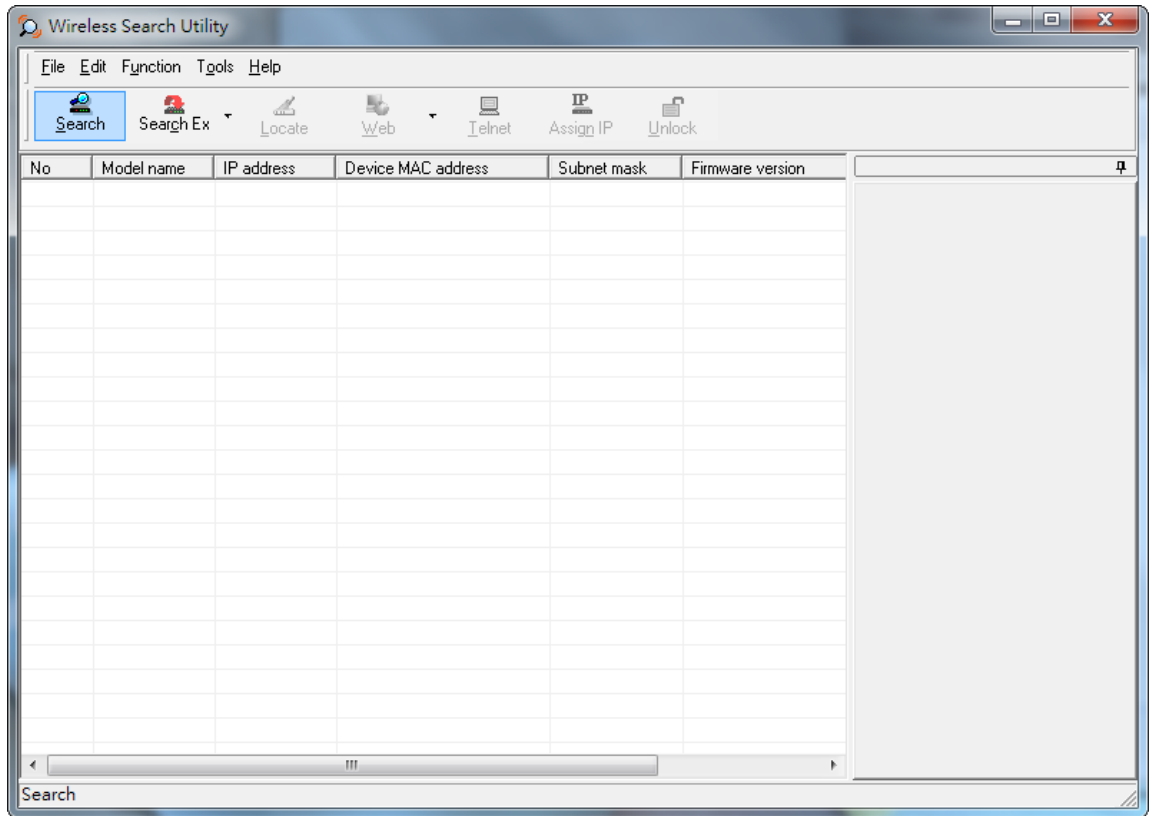
## Configuring the Wireless Search Utility

The Broadcast Search function is used to locate all AWK-4131A APs that are connected to the same LAN as your computer. After locating an AWK-4131A, you will be able to change its IP address. Since the Broadcast Search function searches by TCP packet and not IP address, it doesn't matter if the AWK-4131A is configured as an AP or Client. In either case, APs and Clients connected to the LAN will be located, regardless of whether or not they are part of the same subnet as the host.

- Start the **Wireless Search Utility** program. When the Login page appears, select the **Device Search only** option to search for devices and to view the configuration of each device. Select the **Device management** option to assign IPs, upgrade firmware, and locate devices.

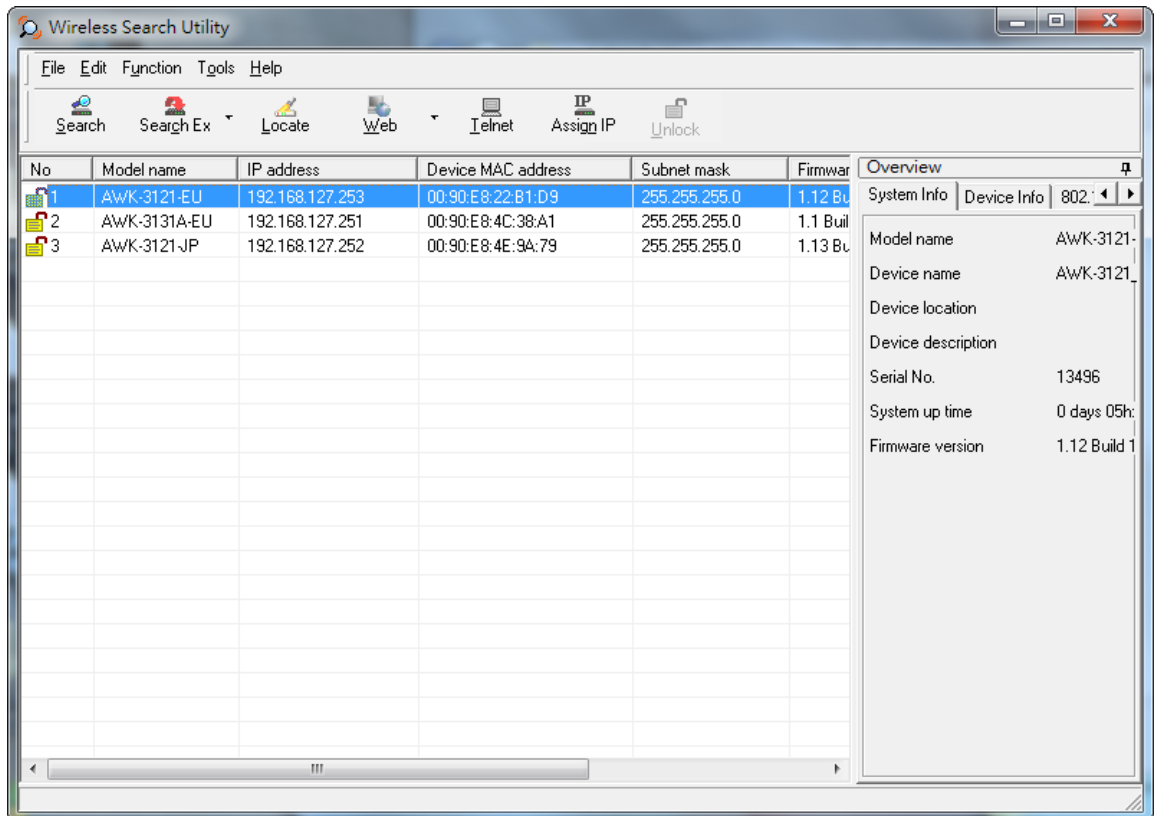


2. Open the **Wireless Search Utility** and then click the **Search** icon.

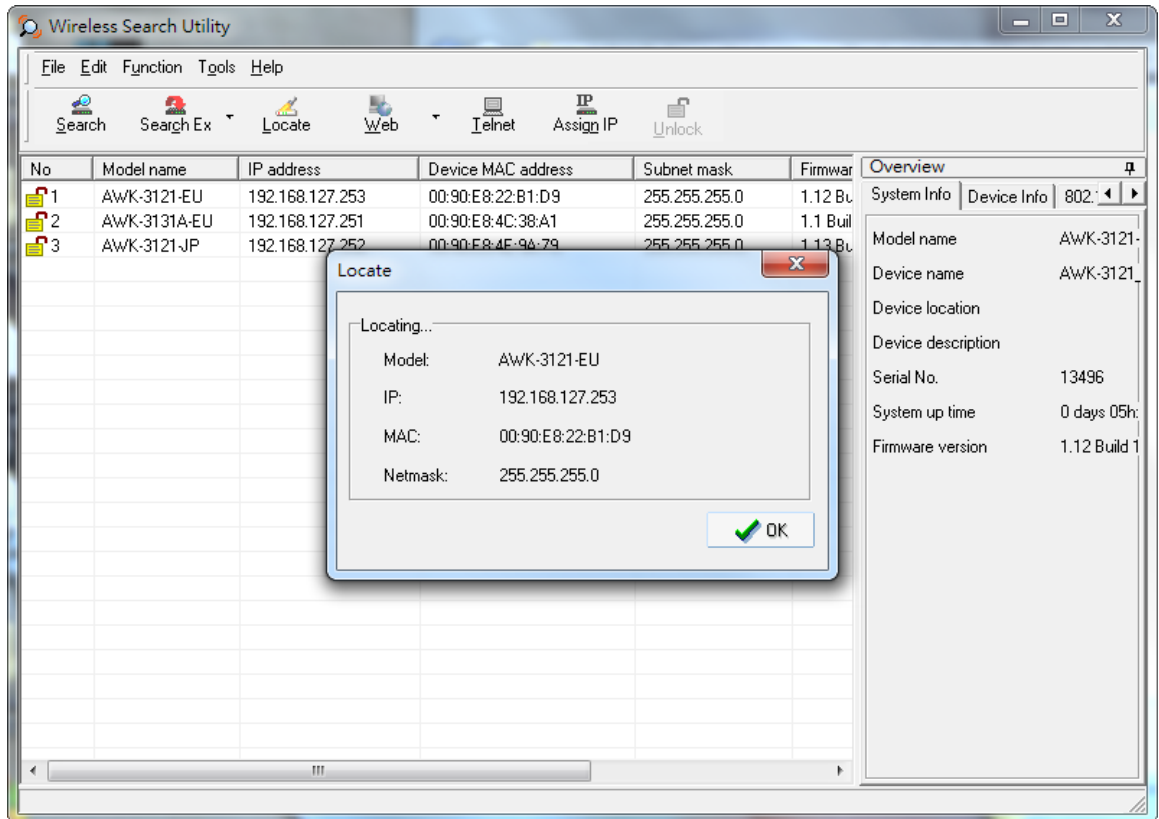


The **Searching** window indicates the progress of the search.

3. When the search is complete, all AWKs that were located will be displayed in the **Wireless Search Utility** window.

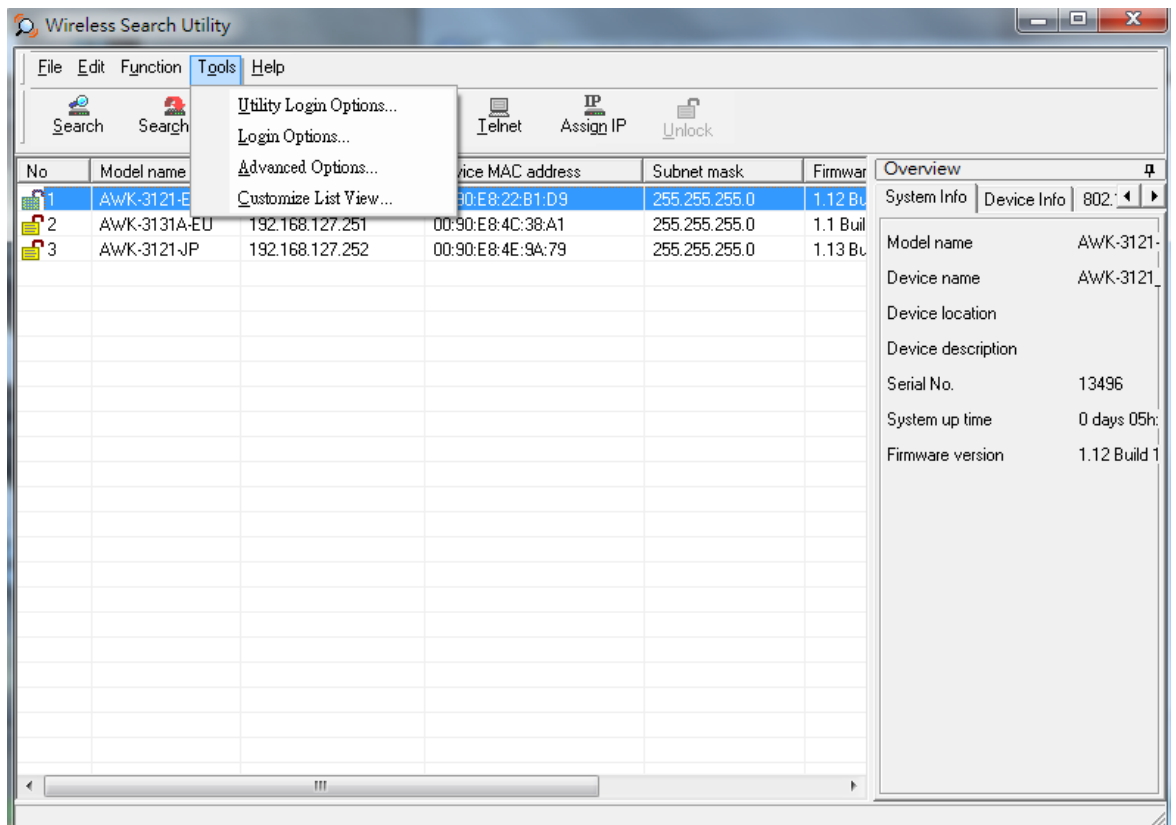


4. Click **Locate** to cause the selected device to beep.



Make sure your AWK is **unlocked** before using the search utility function buttons (Locate, Assign IP, etc.). The AWK will unlock automatically if the password is set to the default. Otherwise you must enter the new password manually.

Go to **Tools → Login Options** to manage and unlock additional AWKs.



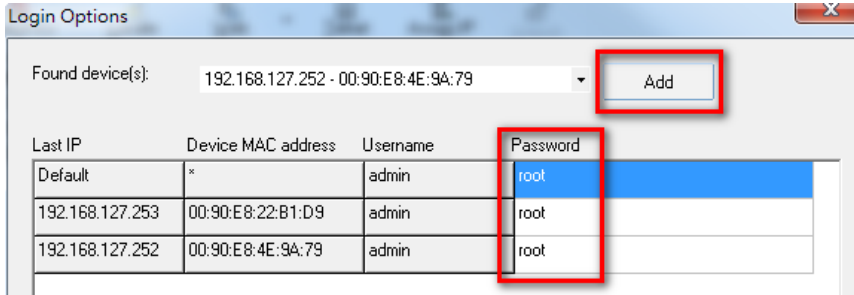


Use the scroll down list to select the MAC addresses of those AWKs you would like to manage, and then click **Add**. Key in the password for the AWK device and then click **OK** to save. If you return to the search page and search for the AWK again, you will find that the AWK will unlock automatically.

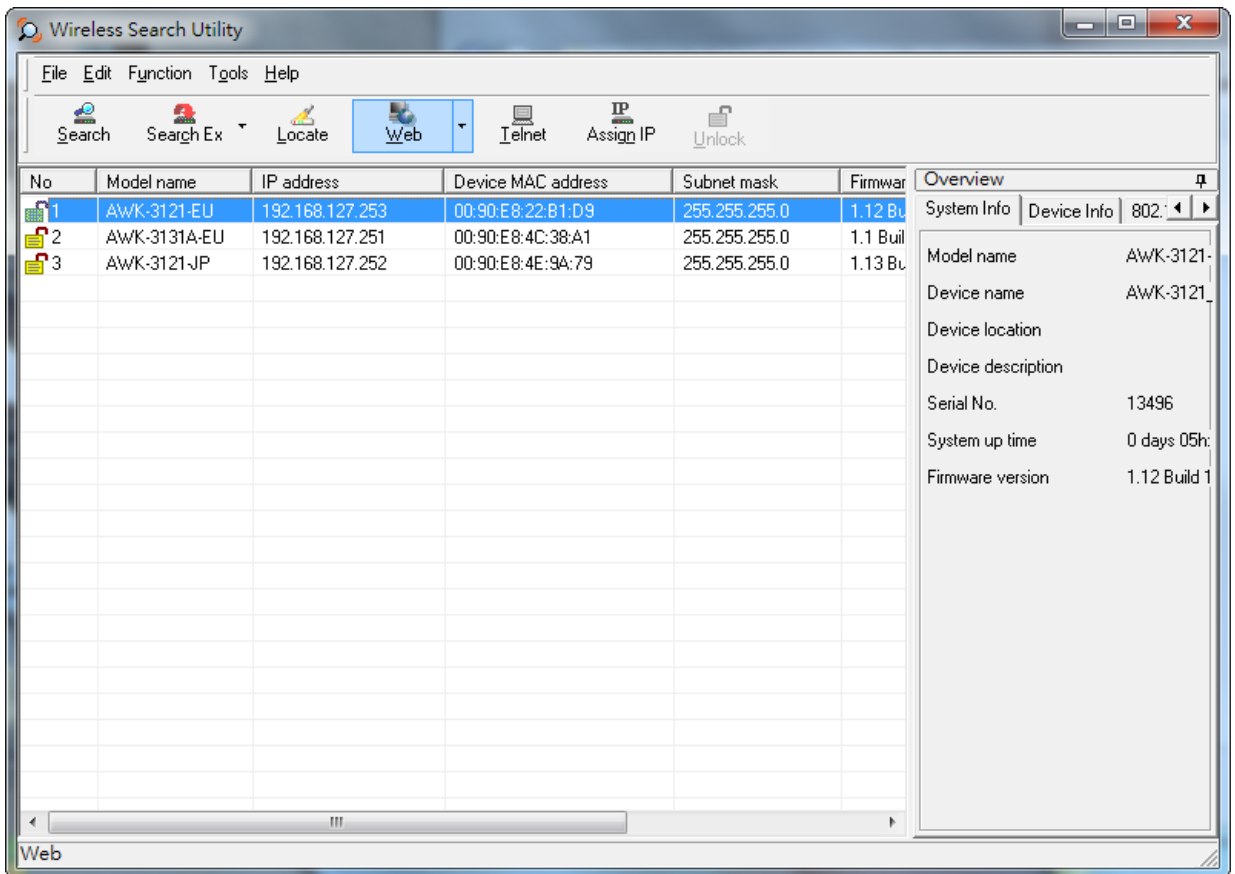


**ATTENTION**

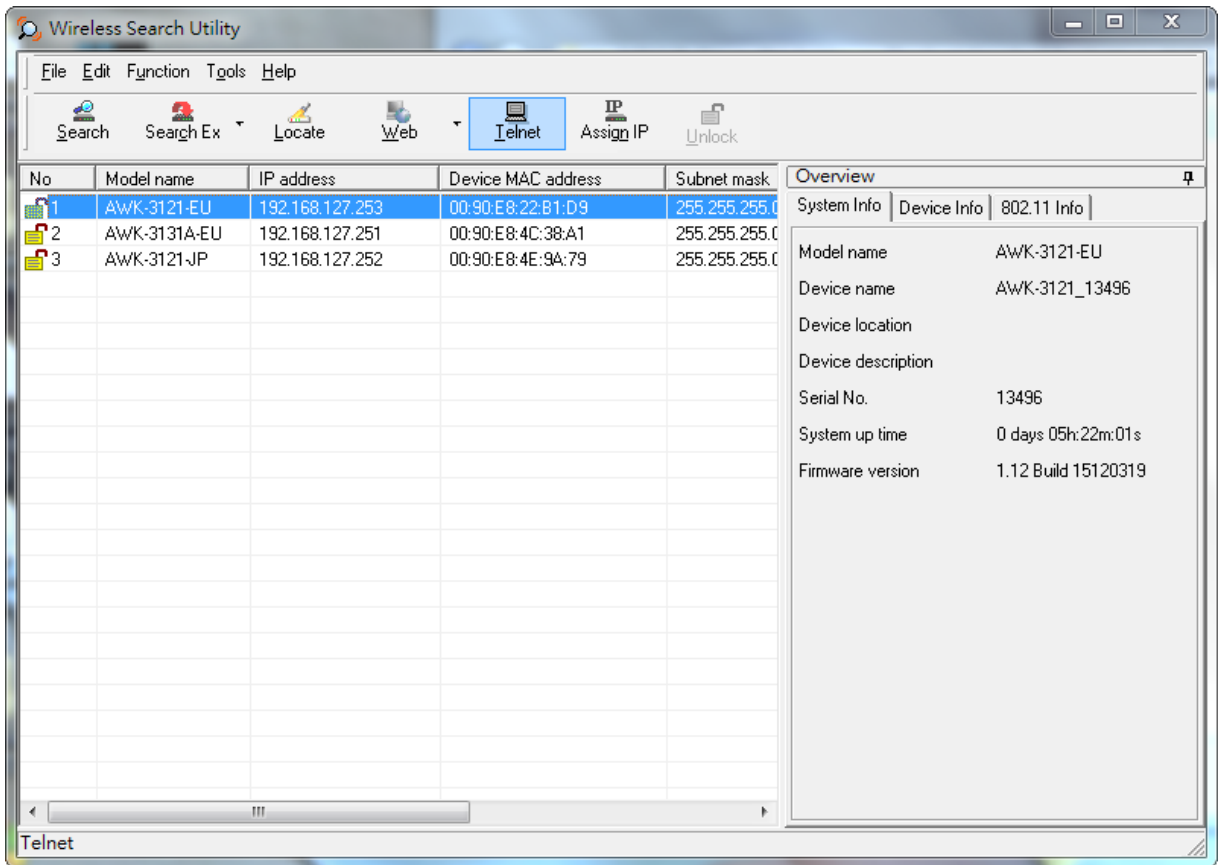
For security purposes, we suggest you can change the Wireless Search Utility login password instead of using the default.



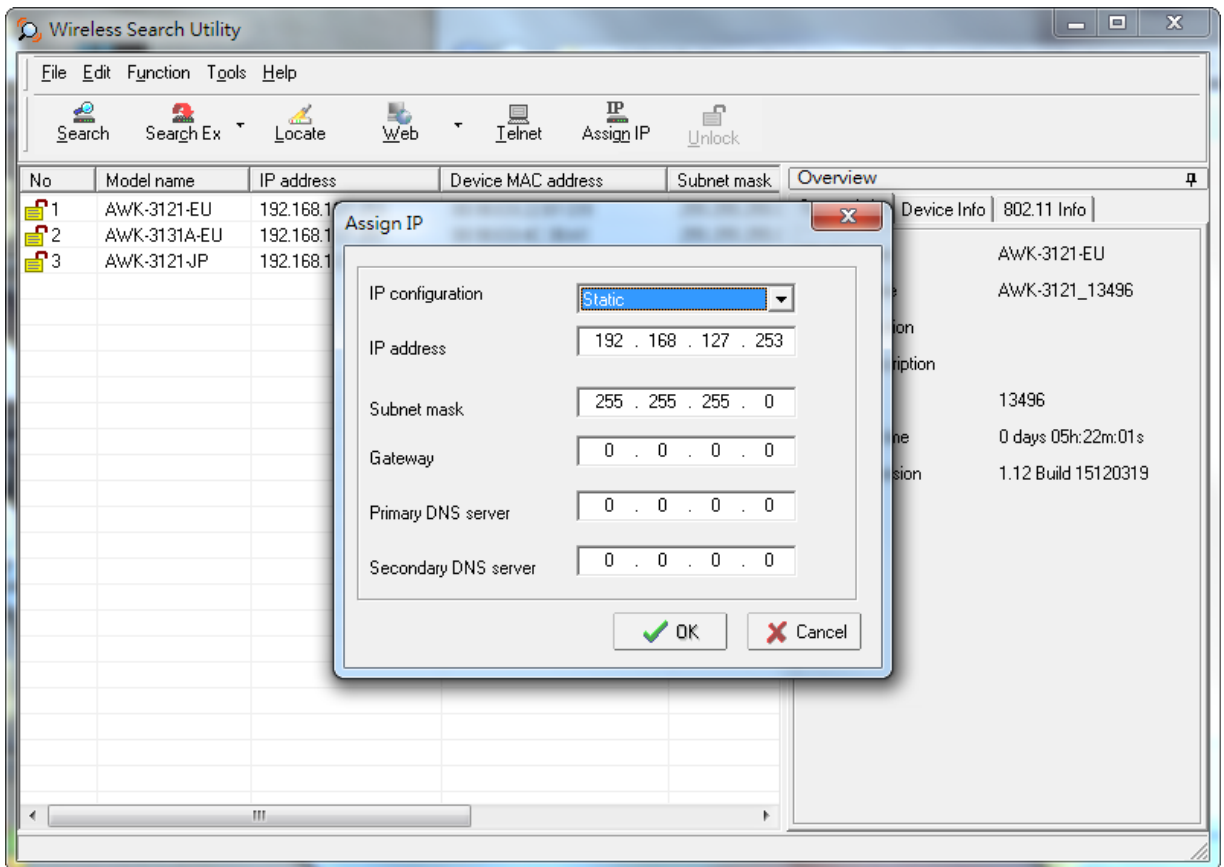
To modify the configuration of the highlighted AWK, click on the Web icon to open the web console. Refer to Chapter 3, "Using the Web Console," for information on using the web console.



Click on **Telnet** if you would like to use telnet to configure your AWKs.



Click **Assign IP** to change the IP setting.



The three advanced options—**Search**, **Connection**, and **Miscellaneous**—are explained below:

### Search

- **Retry count (default=5):** Indicates the number of times the search will be automatically retried.
- **Retry interval (ms):** Specifies the interval between retries.

Advanced Options

Search | Connection | Misc.

Retry count: 5

Retry interval (ms): 1000

Multicast retry count: 3

OK Cancel

### Connection

- **Connection timeout (secs):** Sets the waiting time for the **Default Login**, **Locate**, **Assign IP**, **Upload Firmware**, and **Unlock** actions to complete.
- **Upgrade timeout (secs):** Sets the waiting time for a firmware upgrade before a connection is disconnected, which is the waiting time for the firmware to be written to flash.

Advanced Options

Search | Connection | Misc.

Connection timeout (sec): 10

Upgrade timeout (sec): 500

Protocol timeout (msec): 200

OK Cancel

### Misc.

**Search on start:** Checkmark this option if you would like the search function to start searching for devices after you log in to the Wireless Search Utility.

Advanced Options

Search | Connection | Misc.

Search on start

OK Cancel

## Other Console Considerations

---

This chapter explains how to access the AWK-3121 for the first time. In addition to HTTP access, there are four ways to access AWK-3121: serial console, Telnet console, SSH console, and HTTPS console. The serial console connection method, which requires using a short serial cable to connect the AWK-3121 to a PC's COM port, can be used if you do not know the AWK-3121's IP address. The other consoles can be used to access the AWK-3121 over an Ethernet LAN, or over the Internet.

The following topics are covered in this chapter:

- ❑ **RS-232 Console Configuration (115200, None, 8, 1, VT100)**
- ❑ **Configuration by Telnet and SSH Consoles**
- ❑ **Configuration by Web Browser with HTTPS/SSL**
- ❑ **Disabling Telnet and Browser Access**

# RS-232 Console Configuration (115200, None, 8, 1, VT100)

The serial console connection method, which requires using a short serial cable to connect the AWK-3121 to a PC's COM port, can be used if you do not know the AWK-3121's IP address. It is also convenient to use serial console configurations when you cannot access the AWK-3121 over Ethernet LAN, such as in the case of LAN cable disconnections or broadcast storming over the LAN.



### ATTENTION

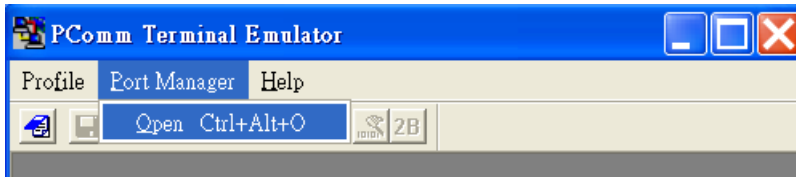
Do not use the RS-232 console manager when the AWK-3121 is powered at reversed voltage (ex. -48VDC), even though reverse voltage protection is supported. If you need to connect the RS-232 console at reversed voltage, Moxa's TCC-82 isolator is your best solution.

### NOTE

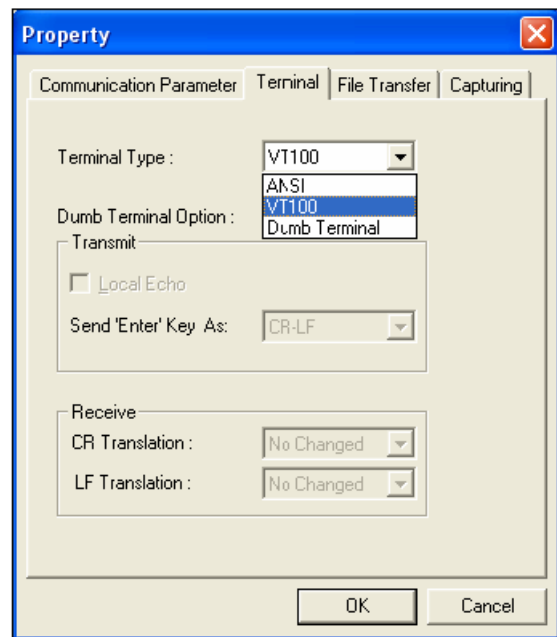
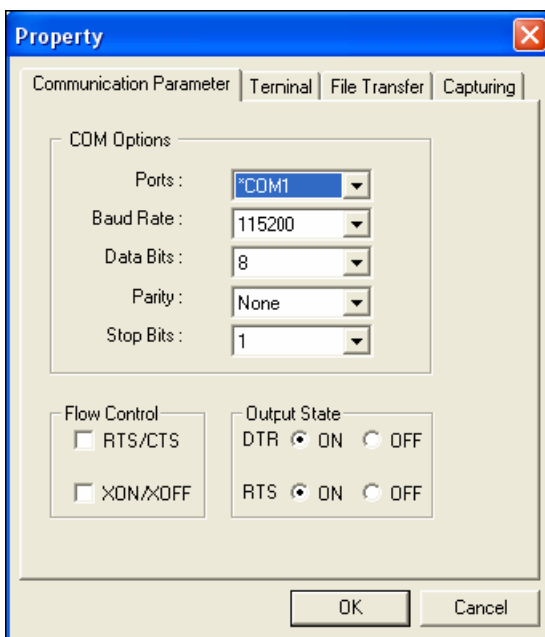
We recommend using **Moxa PComm (Lite)** Terminal Emulator, which can be downloaded free of charge from Moxa's website.

Before running PComm Terminal Emulator, use an RJ45 to DB9-F (or RJ45 to DB25-F) cable to connect the AWK-3121's RS-232 console port to your PC's COM port (generally COM1 or COM2, depending on how your system is set up). After installing PComm Terminal Emulator, take the following steps to access the RS-232 console utility.

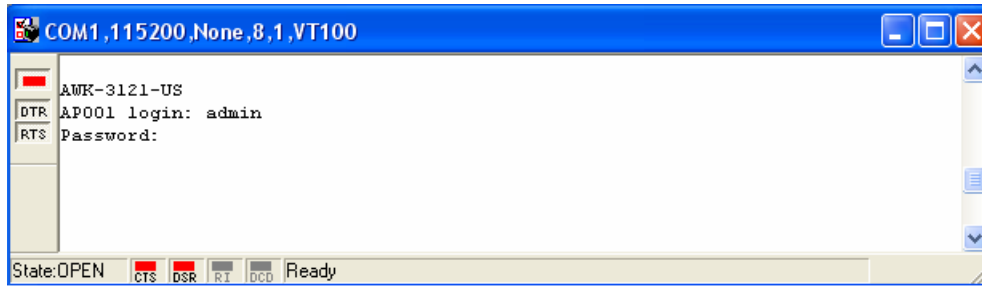
1. From the Windows desktop, open the Start menu and start **PComm Terminal Emulator** in the PComm (Lite) group.
2. Select Open under Port Manager to open a new connection.



3. The **Communication Parameter** page of the Property window opens. Select the appropriate COM port for Console Connection, **115200** for Baud Rate, **8** for Data Bits, **None** for Parity, and **1** for Stop Bits. Click on the **Terminal** tab, and select **VT100 (or ANSI)** for Terminal Type. Click on **OK** to continue.



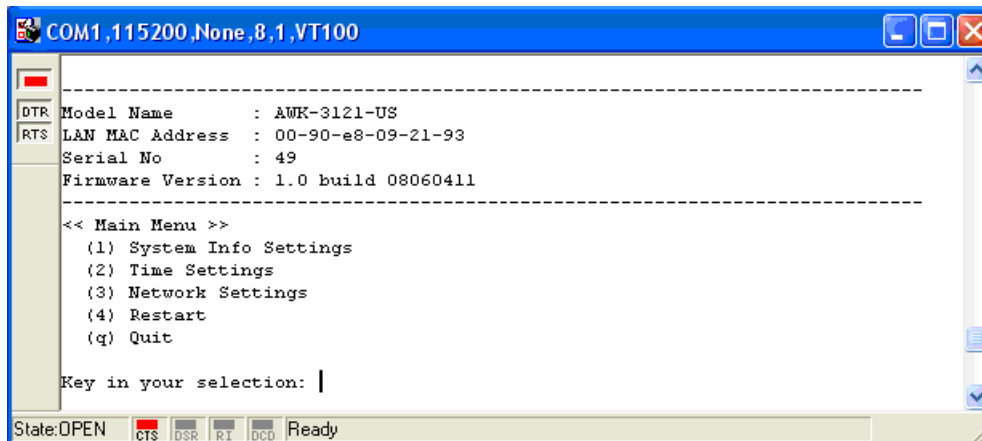
4. The Console login screen will appear. Log into the RS-232 console with the login name (default: **admin**) and password (default: **root**, if no new password is set).



```

COM1,115200,None,8,1,VT100
AWK-3121-US
AP001 login: admin
Password:
State:OPEN cts dsr rt dcc Ready
  
```

5. The AWK-3121's device information and Main Menu will be displayed. Please follow the description on screen and select the administration option you wish to perform.



```

COM1,115200,None,8,1,VT100
-----
DTR Model Name      : AWK-3121-US
RTS LAN MAC Address  : 00-90-e8-09-21-93
    Serial No       : 49
    Firmware Version: 1.0 build 08060411
-----
<< Main Menu >>
(1) System Info Settings
(2) Time Settings
(3) Network Settings
(4) Restart
(q) Quit

Key in your selection: |
State:OPEN cts dsr rt dcc Ready
  
```

**NOTE** To modify the appearance of the PComm Terminal Emulator window, select **Edit → Font** and then choose the desired formatting options.



### ATTENTION

If you unplug the RS-232 cable or trigger **DTR**, a disconnection event will be evoked to enforce logout for network security. You will need to log in again to resume operation.

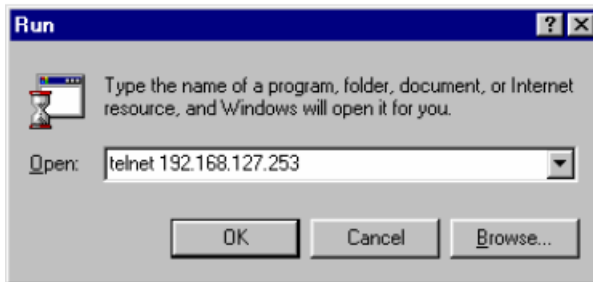
## Configuration by Telnet and SSH Consoles

You may use Telnet or SSH client to access the AWK-3121 and manage the console over a network. To access the AWK-3121's functions over the network from a PC host that is connected to the same LAN as the AWK-3121, you need to make sure that the PC host and the AWK-3121 are on the same logical subnet. To do this, check your PC host's IP address and subnet mask.

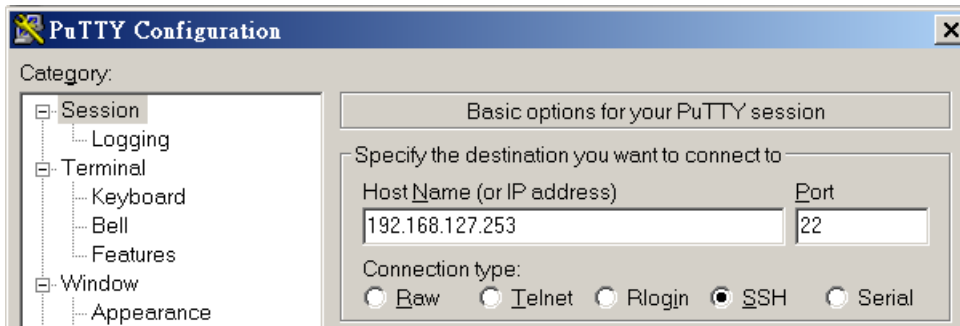
**NOTE** The AWK-3121's default IP address is **192.168.127.253** and the default subnet mask is **255.255.255.0** (for a Class C network). If you do not set these values properly, please check the network settings of your PC host and then change the IP address to 192.168.127.xxx and subnet mask to 255.255.255.0.

Follow the steps below to access the console utility via Telnet or SSH client.

1. From Windows Desktop, run **Start** → **Run**, and then use Telnet to access the AWK-3121's IP address from the Windows Run window (you may also issue the telnet command from the MS-DOS prompt).



2. When using an SSH client (e.g.: PuTTY), run the client program (ex. putty.exe) and then input the AWK-3121's IP address, specifying **22** for the SSH connection port.

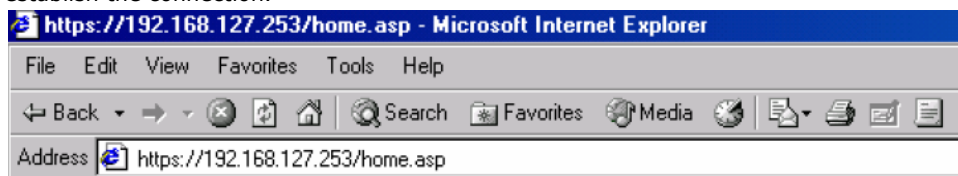


3. The Console login screen will appear. Please refer to the previous paragraph "RS-232 Console Configuration" and for login and administration.

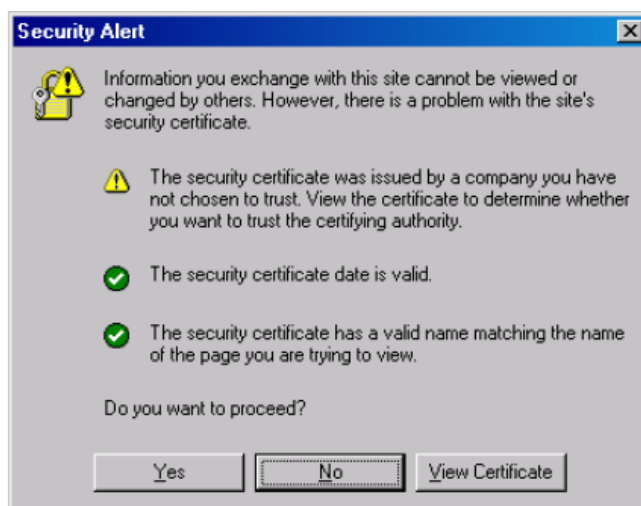
## Configuration by Web Browser with HTTPS/SSL

To secure your HTTP access, the AWK-3121 supports HTTPS/SSL encryption for all HTTP traffic. Perform the following steps to access the AWK-3121's web browser interface via HTTPS/SSL.

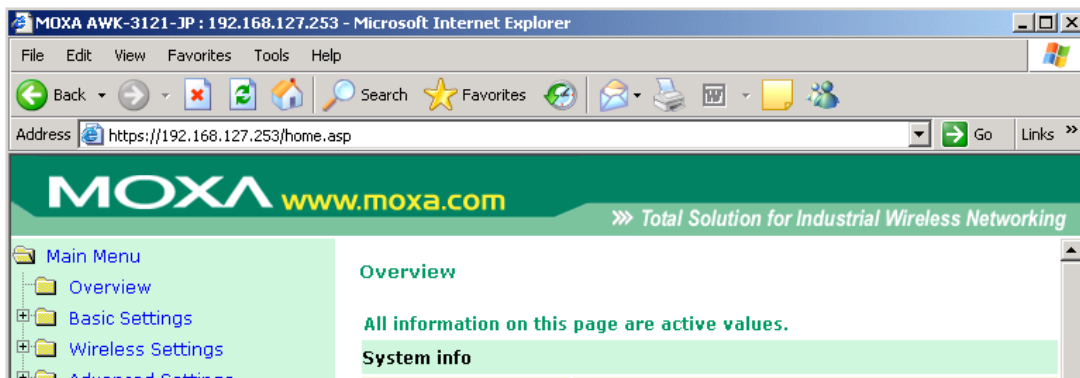
1. Open your web browser and type `https://<AWK-3121's IP address>` in the address field. Press **Enter** to establish the connection.



2. Warning messages will pop out to warn users that the security certificate was issued by a company they have not chosen to trust.



3. Select **Yes** to accept the certificate issued by Moxa IW and then enter the AWK-3121's web browser interface secured via HTTPS/SSL. (You can see the protocol in URL is **https**.) Then you can use the menu tree on the left side of the window to open the function pages to access each of AWK-3121's functions.



## Disabling Telnet and Browser Access

If you are connecting the AWK-3121 to a public network but do not intend to use its management functions over the network, then we suggest disabling both Telnet Console and Web Configuration. Please run **Maintenance** → **Console Settings** to disable them, as shown in the following figure.

**Console Settings**

HTTP console	<input type="radio"/> Enable <input checked="" type="radio"/> Disable
HTTPS console	<input checked="" type="radio"/> Enable <input type="radio"/> Disable
Telnet console	<input type="radio"/> Enable <input checked="" type="radio"/> Disable
SSH console	<input checked="" type="radio"/> Enable <input type="radio"/> Disable



## References

---

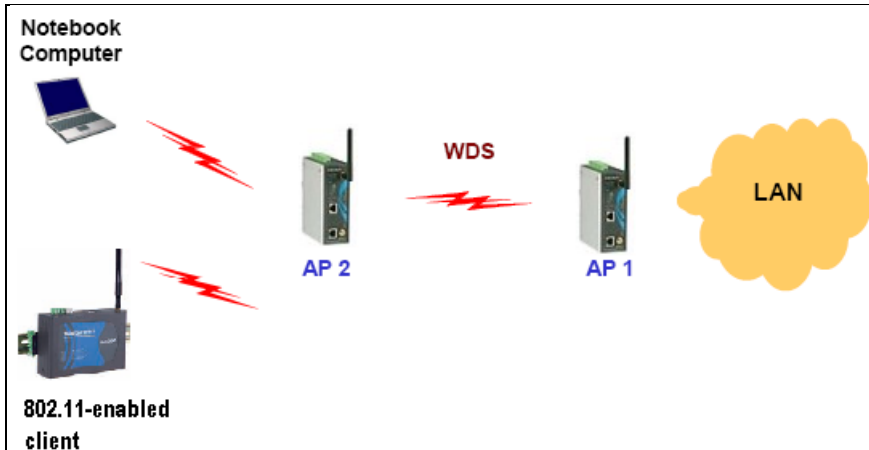
This chapter provides more detailed information about wireless-related technologies. The information in this chapter can help you administer your AWK-3121s and plan your industrial wireless network better.

The following topics are covered in this appendix:

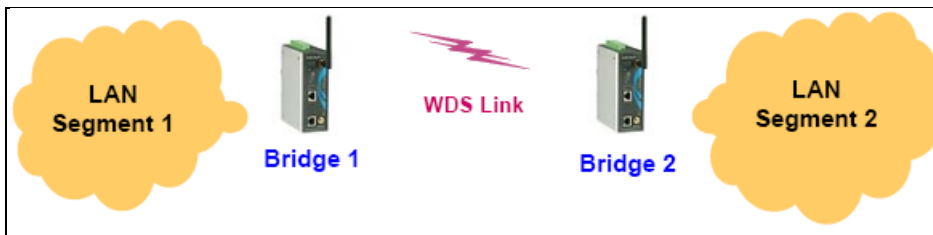
- ❑ **Wireless Distribution System (WDS)**
- ❑ **Beacon**
- ❑ **DTIM**
- ❑ **Fragment**
- ❑ **RTS Threshold**
- ❑ **STP and RSTP**
  - The STP/RSTP Concept
  - Differences between RSTP and STP

# Wireless Distribution System (WDS)

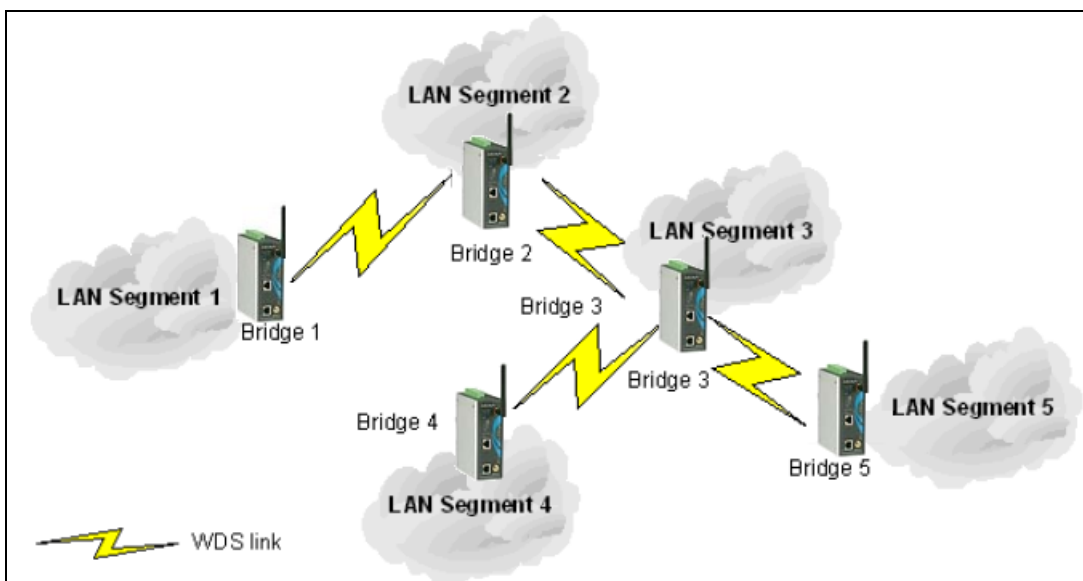
Traditionally, APs are connected via Ethernet LAN ports. By using a Wireless Distribution System (WDS), APs can communicate with one another wirelessly. For example, AP 2 acts as an access point for the notebook computers or other IEEE802.11-enabled clients, and forwards packets sent from the notebook computers to AP 1 through WDS. Then, AP 1 forwards the packets to the Ethernet LAN. Packets destined for the notebook computers follow a reverse path from the Ethernet LAN through the APs to the notebook computers. In this way, AP 2 acts as an "AP repeater."



By using WDS, two or more LAN segments can be connected wirelessly. As illustrated in the above figure, a pair of wireless LAN-to-LAN bridges is used to connect two LAN segments. Since the AP is WDS-enabled, it can be used as a wireless bridge.

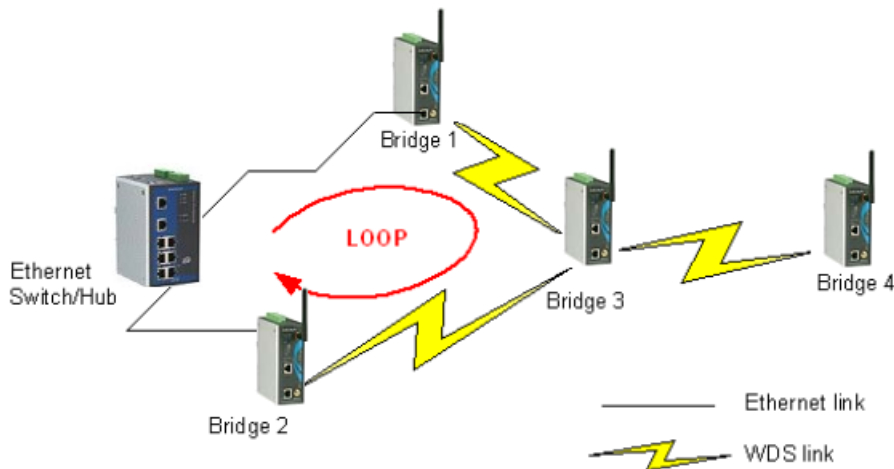


It is a good idea to plan your wireless network by drawing a diagram so that you know how each AWK-3121 is connected to other peer APs or wireless bridges by WDS, and how bridges are connected to other peer bridges by WDS. See the following figure for an example of a network-planning diagram.



**ATTENTION**

Be sure to eliminate loops from networks that consist of wireless bridges, Ethernet switches, Ethernet links, and WDS links. If any loops exist, packets will circle around the loops and network performance will be seriously degraded. The following figure shows a network topology containing a loop.



## Beacon

A beacon is a packet broadcast by the AP to keep the network synchronized. A beacon includes the wireless LAN service area, the AP address, the Broadcast destination address, a time stamp, Delivery Traffic Indicator Maps (DTIM), and the Traffic Indicator Message (TIM). Beacon Interval indicates the frequency interval of AP.

## DTIM

Delivery Traffic Indication Map (DTIM) is contained in beacon frames. It is used to indicate that broadcast and multicast frames buffered by the AP will be delivered shortly. Lower settings result in more efficient networking, while preventing your PC from dropping into power-saving sleep mode. Higher settings allow your PC to enter sleep mode, thus saving power.

## Fragment

A lower setting means smaller packets, which will create more packets for each transmission. If you have decreased this value and experience high packet error rates, you can increase it again, but it will likely decrease overall network performance. Only minor modifications of this value are recommended.

## RTS Threshold

RTS Threshold (256-2346) – This setting determines how large a packet can be before the Access Point coordinates transmission and reception to ensure efficient communication. This value should remain at its default setting of 2,346. When you encounter inconsistent data flow, only minor modifications are recommended.

# STP and RSTP

## The STP/RSTP Concept

**Spanning Tree Protocol (STP)** was designed to help reduce link failures in a network, and provide protection from loops. Networks that have a complicated architecture are prone to broadcast storms caused by unintended loops in the network. The STP protocol is part of the IEEE802.1D standard, 1998 Edition bridge specification.

*Rapid Spanning Tree Protocol (RSTP)* implements the Spanning Tree Algorithm and Protocol defined by IEEE802.1w-2001 standard. RSTP provides the following benefits:

- The topology of a bridged network will be determined much more quickly compared to STP.
- RSTP is backward compatible with STP, making it relatively easy to deploy. For example:
  - Defaults to sending 802.1D-style BPDUs if packets with this format are received.
  - STP (802.1D) and RSTP (802.1w) can operate on the LAN ports and WLAN ports (AP and WDS1-WDS8) of the same AWK-3121.

This feature is particularly helpful when the AWK-3121 connects to older equipment, such as legacy switches.

## Differences between RSTP and STP

RSTP is similar to STP, but includes additional information in the BPDUs that allow each bridge to confirm that it has taken action to prevent loops from forming when it decides to enable a link to a neighboring bridge. Adjacent bridges connected via point-to-point links will be able to enable a link without waiting to ensure that all other bridges in the network have had time to react to the change. The main benefit of RSTP is that the configuration decision is made locally rather than network-wide, allowing RSTP to carry out automatic configuration and restore a link faster than STP.

# B

## Supporting Information

---

This chapter presents additional information about this manual and product. You can also learn how to contact Moxa for technical support.

The following topics are covered in this appendix:

- **About This User's Manual**
- **DoC (Declaration of Conformity)**
  - Federal Communication Commission Interference Statement
  - R&TTE Compliance Statement
- **Firmware Recovery**

## About This User's Manual

This manual is mainly designed for, but not limited to, the following hardware and firmware for the AWK-3121:

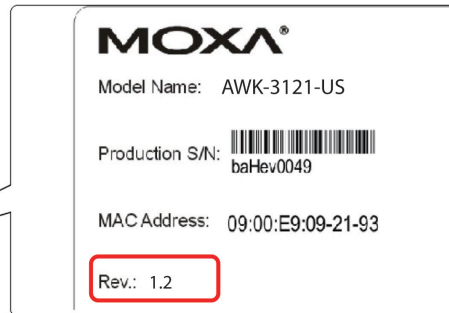
- Hardware Revision: **1.2**
- Firmware Version: **1.13**

You are strongly recommended to visit Moxa's website (<http://www.moxa.com>) and find the latest product datasheet, firmware, QIG (Quick Installation Guide), UM (User's Manual) and related information.



### NOTE

You can find out the hardware revision number of AWK-3121 on the side label.



The firmware version number can be seen on the **Overview** page, as follows:

<b>Overview</b>	
<b>All information on this page are active values.</b>	
<b>System Info</b>	
<b>Model name</b>	AWK-3121-US
<b>Device name</b>	AWK-3121_0768
<b>Serial No.</b>	768
<b>System up time</b>	0 days 00h:15m:25s
<b>Firmware version</b>	1.13 Build 16031413

## DoC (Declaration of Conformity)

### Federal Communication Commission Interference Statement

This equipment has been tested and found to comply with the limits for a Class B digital device, pursuant to Part 15 of the FCC Rules. These limits are designed to provide reasonable protection against harmful interference in a residential installation. This equipment generates uses and can radiate radio frequency energy and, if not installed and used in accordance with the instructions, may cause harmful interference to radio communications. However, there is no guarantee that interference will not occur in a particular installation. If this equipment does cause harmful interference to radio or television reception, which can be determined by turning the equipment off and on, the user is encouraged to try to correct the interference by one of the following measures:

- Reorient or relocate the receiving antenna.
- Increase the separation between the equipment and receiver.
- Connect the equipment into an outlet on a circuit different from that to which the receiver is connected.

- Consult the dealer or an experienced radio/TV technician for help.

**FCC Caution:** To assure continued compliance, (example – use only shielded interface cables when connecting to computer or peripheral devices). Any changes or modifications not expressly approved by the party responsible for compliance could void the user’s authority to operate this equipment. This transmitter must not be co-located or operated in conjunction with any other antenna or transmitter.

**FCC Radiation Exposure Statement**

*This equipment complies with FCC radiation exposure limits set forth for an uncontrolled environment. This equipment should be installed and operated with a minimum distance of 20 cm between the radiator & your body.*

This device complies with Part 15 of the FCC Rules. Operation is subject to the following two conditions: (1) This device may not cause harmful interference, and (2) this device must accept any interference received, including interference that may cause undesired operation.

FCC 15.407(e): Within the 5.15-5.25 GHz band, U-NII devices will be restricted to indoor operations to reduce any potential for harmful interference to co-channel MSS operations.

<p><b>NOTE</b> The availability of some specific channels and / or operational frequency bands are country dependent and are firmware programmed at the factory to match the intended destination. The firmware setting is not accessible by the end user.</p>
--

## R&TTE Compliance Statement

Moxa declares that the apparatus AWK-3121 complies with the essential requirements and other relevant provisions of Directive 1999/5/EC.

This equipment complies with all the requirements of DIRECTIVE 1999/5/CE OF THE EUROPEAN PARLIAMENT AND THE COUNCIL OF 9 March 1999 on radio equipment and telecommunication terminal equipment and the mutual recognition of their conformity (R&TTE).

The R&TTE Directive repeals and replaces in the directive 98/13/EEC (Telecommunications Terminal Equipment and Satellite Earth Station Equipment) as of April 8, 2000.

**Safety**

This equipment is designed with the utmost care for the safety of those who install and use it. However, special attention must be paid to the dangers of electric shock and static electricity when working with electrical equipment. All guidelines of this and of the computer manufacturer must therefore be allowed at all times to ensure the safe use of the equipment.

**EU Countries Intended for Use**

The ETSI version of this device is intended for home and office use in Austria, Belgium, Denmark, Finland, France (with Frequency channel restrictions), Germany, Greece, Ireland, Italy, Luxembourg, Portugal, Spain, Sweden, The Netherlands, and United Kingdom.

The ETSI version of this device is also authorized for use in EFTA member states Norway and Switzerland.

**EU Countries Not Intended for Use**

None.

**Potential Restrictive Use**

France: only channels 10, 11, 12, and 13.

# Firmware Recovery

When the LEDs of **FAULT**, **Signal Strength**, **CLIENT**, **BRIDGE** and **WLAN** all light up simultaneously and blink at one-second interval, it means the system booting has failed. It may result from some wrong operation or issues such as an unexpected shutdown during firmware update. The AWK-3121 is designed to help administrators recover such damage and resume system operation rapidly. You can refer to the following instructions to recover the firmware:

Connect to the AWK-3121's ES-232 console with **115200bps and N-8-1**. You will see the following message shown on the terminal emulator every one second.

```
Section userdisk Cksum error = 0xa5feadde --> 0x658c5051
Press Ctrl-C to enter Firmware Recovering Process.....
Press Ctrl-C to enter Firmware Recovering Process.....
Press Ctrl-C to enter Firmware Recovering Process.....
Press Ctrl-C to enter Firmware Recovering Process.....
Press Ctrl-C to enter Firmware Recovering Process.....
Press Ctrl-C to enter Firmware Recovering Process.....
Press Ctrl-C to enter Firmware Recovering Process.....
Press Ctrl-C to enter Firmware Recovering Process.....
```

Press **Ctrl - C** and the following message will appear.

```
Press Ctrl-C to enter Firmware Recovering Process.....
=====
IP address of AWK-3121 : 0.0.0.0
IP address of TFTP server : 0.0.0.0
=====
1. Start to firmware upgrade using the above network setting immediately.
2. Change the network settings.
Enter your selection : (1-2,enter for abort): █
```

Enter **2** to change the network setting. Specify the path for the AWK-3121 firmware file on the TFTP server and press **y** to write the settings into flash memory.

```
=====
IP address of AWK-3121 : 0.0.0.0
IP address of TFTP server : 0.0.0.0
=====
1. Start to firmware upgrade using the above network setting immediately.
2. Change the network settings.
Enter your selection : (1-2,enter for abort): 2

IP address of AWK-3121 : 192.168.1.2
IP address of TFTP server : 192.168.1.1
Update RedBoot non-volatile configuration - continue (y/n)? y
```

When AWK-3121 restarts, and the "Press Ctrl-C to enter Firmware Recovery Process..." message will reappear, press **Ctrl+ C** to enter the menu and select 1 to start the firmware upgrade process.

```
Press Ctrl-C to enter Firmware Recovering Process.....
=====
IP address of AWK-3121 : 192.168.1.2
IP address of TFTP server : 192.168.1.1
=====
1. Start to firmware upgrade using the above network setting immediately.
2. Change the network settings.
Enter your selection : (1-2,enter for abort): 1
```

Select **0** in the sub-menu to load the firmware image via LAN, and then enter the file name of the firmware to start the firmware recovery.

```
=====
Load method select :
0. Load from LAN
1. Load from serial with Xmodem
q. Abort select.
=====
Please select item : 0
Please input load image name..
Default file name : AWK-3121.rom
User Input file name : AWK-3121_1.0.rom
```